

APPLICATION MANUAL



Applications for M3 Mobile Devices

Version : 2.0.0

Release Date : 04,Dec, 2017

www.m3mobile.net

Copyright © 2015 M3 MOBILE. ALL RIGHT RESERVED

4F, Namjeon building, 44, Guuigangbyeon-ro, Gwangjin-gu, Seoul, Korea, 05116,

Tel. +822 574 0037, **Fax.** +82 2 574 0292

APPLICATION MANUAL

Table of Contents

CHAPTER 1. STARTUP WM GUIDE	3
1.1 StartUp.inf.....	3
1.2 M3.ini	4
1.3 VisualINI	14
CHAPTER 2. STARTUP CE GUIDE	21
2.1 StartUp.inf.....	21
2.2 M3.ini	22
CHAPTER 3. SCANNER.....	30
3.1 ScanEmul.exe.....	30
CHAPTER 4. IMAGER.....	39
4.1 ImagerEmul.exe.....	39
CHAPTER 5. LONG -RANGE SCANNER.....	53
5.1 LRScanEmul.exe.....	53
CHAPTER 6. CAMERA WM	62
6.1 Camera.exe	62
CHAPTER 7. CAMERA CE	64
7.1 Camera.exe	64
CHAPTER 8. RFID	66
8.1 RFIDEmul.exe	66
CHAPTER 9. GPS	72
9.1 GPSManager.exe.....	72
CHAPTER 10. APPCENTER WM.....	75
10.1 AppCenter.exe.....	75
CHAPTER 11. APPCENTER CE.....	80
11.1 AppCenter.exe.....	80
CHAPTER 12. UHF GUN READER.....	85
12.1 UHF_GunTest.exe	85
CHAPTER 13. UHF EMUL	88
13.1 UHF_Emul.exe.....	88
CHAPTER 14. UHF CAEN.....	90
13.1 RFID_UHF_Net.exe.....	90
CHAPTER 15. PHONE CE	92
14.1 Phone.exe	92

APPLICATION MANUAL

CHAPTER 1. STARTUP WM GUIDE

1.1 StartUp.inf

In StartUp.inf, user can write commands to copy, move, delete, rename files, create folder or shortcut, and modify registry values. Moreover, DLL register, unregister and auto run of an executable file is also possible.

Here is an example of CopyFile.

```
CopyFile=/H "\\Flash Disk\Scanner\KScanBar.dll" "\\Pages\KScanBar_TEST.dll"
```

This command is will copy KScanBar.dll which is located in WFlash Disk WScanner folder to WPages folder and rename it to **KScanBar_TEST.dll** after hard reset (/H command, /S is used for soft reset).

Note

Above example will not execute successfully if the file does not exist in defined path folder.

For all commands (copy, delete, etc.), user can select when to execute the command; after hard reset or soft reset. In addition, for copy and move commands, user can rename the file as show in the above example.

Command structure and example is described below:

```
// CopyFile=[execute type] [path to original file] [path to copy]
Eg: Example shown above.
// MoveFile=[execute type] [path to original file] [path to move]
Eg: MoveFile=/s "\\My Documents\a.cab" "\\Flash Disk\a.cab"
//DeleteFile=[execute type] [path to the file to delete]
Eg: DeleteFile=/H "\\Flash Disk\a.lnk"
//CreateFolder=[execute type] [path to the folder to create]
Eg: CreateFolder=/h "\\My Documents\hardreset"
//ShortCut=[execute type] [path to original file] [path to the quick link]
Eg: ShortCut=/s "\\Flash Disk\a.exe" "\\My Documents\a.lnk"
//RegSetValue=[execute type] [data type (string, dword, etc)] [[path] : value]
Eg: RegSetValue=/s string [HKEY_CURRENT_USER\MCSSetting\Scanner]test : "test"
Eg: RegSetValue=/s dword [HKEY_CURRENT_USER\MCSSetting\Scanner]intTest : 68
//DllRegisterServer= [execute type] [path to the file to register]
Eg: DllRegisterServer =/h "\\Flash Disk\NumKeybd.dll"
//DllRegisterServer= [execute type] [path to the file to unregister]
Eg: DllUnregisterServer =/h "\\Flash Disk\NumKeybd.dll"
//RunExe =[execute type] [path to the file to execute] [arguments]
Eg: RunExe =/h "\\Flash Disk\b.exe"
```

APPLICATION MANUAL

1.2 M3.ini

NOTE

M3.ini cannot be edited in PDA without special application.
It must be copied to PC, edited in PC then copied back to PDA.

If not commented separately, '0' represents disable and '1' represents enable.

```
[SCANNER]
AutoON=0
ExeFile=\Flash Disk\Scanner\ScanEmul.exe
```

```
[Imager]
AutoON=0
ExeFile=\Flash Disk\Scanner\ScanEmul.exe
```

Setting AutoOn value to '1' will start [ScanEmul](#)/[ImagerEmul](#) automatically after soft/hard reset.

```
[RFID]
AutoON=0
ExeFile=\Flash Disk\RF_ID\RfidEmul.exe
```

Setting AutoOn value to '1' will start [RfidEmul](#) automatically after soft/hard reset.

```
[APPCENTER]
AutoON=0
ExeFile=\Flash Disk\AppCenter\M3AppCenterWm.exe
```

Setting AutoOn value to '1' will start [AppCenterWm](#) automatically after soft/hard reset.

```
// Reg Domain - NO CHANGE:0, FCC:1, ETSI:2, TELEC:3, WW:4, KCC:5 (Not using in
the 30AG)
// If the domain set using this function when clean-boot process, the device
needs a reset.
// Authentication:
// WEP_OFF=0, WEP_ON=1, WEP_AUTO=2, WPA_PSK=3, WPA_TKIP=4, WPA2_PSK=5,
WPA2_AES=6,
// CCKM_TKIP =7, WEP_CKIP=8, WEP_AUTO_CKIP=9, CCKM_AES=10, WPA_PSK_AES=11,
WPA_AES=12,
// WPA2_PSK_TKIP=13, WPA2_TKIP=14
// Connect:
// 0-Do not connect, 1-Connect with SSID, PWD, Authentication,
// 2-Connect by the SDC Setting File when Clean-boot, 3-Connect by the SDC
Setting File every soft-Reset, (The SDC Setting file can be made by
'M3WlanExport.exe')
// If the password set 0, then the StartUp will check registry.
```

```
[WLAN]
AutoON=0
Domain=0
Connect=0
SSID=
```


APPLICATION MANUAL

```
Password=0
Authentication=5
SDC_File=\Flash Disk\WlanSettings.sdc
```

Setting AutoOn value to '1' will start **WLAN** automatically after soft/hard reset. WLAN regulatory domain: FCC (Americas), ETSI (Europe), TELEC (Japan), WW (Worldwide), KCC (Korea), can be set in M3.ini. And then if SSID(Service Set Identifier), Password, Authentication and Connect could be set in m3.ini, WLAN automatically is connected to SSID of access point. At last SDC File format(*.sdc) including configurations, global settings, and third party config is Summit Client Utility / Laird Profile. When SDC file is located in SDC_File path, SDC File will be restored automatically after hard reset(clean boot)

[BLUETOOTH]

AutoON=0

[PHONE]

AutoON=0

Setting AutoOn value to '1' will start **Bluetooth** and **phone** automatically after hard/soft reset.

```
// Scanner - 1: 1D scanner, 3: 2D scanner, 5: LR Scanner
[DEVICE_TYPE]
Scanner=0
```

After M3.ini version 1.6.0, it is not required to declare device model. But, scanner type still must be declared.

[REGIONAL]

```
Install=0
PrimaryLanguage=12
SubLanguage=1
```

Users can select primary and sub languages. To make the changed applied, must set install value to '1' and reset the device. Refer to below table for primary and sub languages.

[PrimaryLanguage]

54:Afrikaans	28:Albanian	1:Arabic	43:Armenian
77:Assamese	44:Azeri	45:Basque	35:Belaruslan
69:Bengali	2:Bulgarian	3:Catalan	4:Chinese
26:Croatian	5:Czech	6:Danish	101:Divehi
19:Dutch	9:English	39:Estonian	56:Faeroese
41:Farsi	11:Finnish	12:Frence	55:Georgian
7:German	8:Greek	71:Gujarati	13:Hebrew
57:Hindi	14:Hungarian	15:Icelandic	33:Indonesian
16:Italian	17:Japanese	77:Kannada	96:Kashmiri
63:Kazak	87:Konkani	18:Korean	38:Latvian
39:Lithuanian	47:Macedonian	62:Malay	76:Malayalam
88:Manipuri	78:Marathi	80:Mongolian	97:Nepali
20:Norwegian	72:Oriya	21:Ploish	22:Portuguese
70:Punjabi	24:Romanian	25:Russian	79:Sanskrit
26:Serbian	89:Sindhi	27:Slovak	36:Slovenian
10:Spanish	65:Swahili	29:Swedish	90:Syriac
73:Tamil	68:Tatar	74:Telugu	30:Thai

APPLICATION MANUAL

31:Turkish

34:Ukrainian

32:Urdu

67:Uzbek

42:Vietnamese

[Sub-Language]

Arabic	1:Arabic(Saudi Arabia), 2:Arabic(Iraq), 3:Arabic(Egypt), 4:Arabic(Libya), 5:Arabic(Algeria), 6:Arabic(Morocco), 7:Arabic(Tunisia), 8:Arabic(Oman), 9:Arabic(Yemen), 10:Arabic(Syria), 11:Arabic(Jordan), 12:Arabic(Lebanon), 13:Arabic(Kuwait), 14:Arabic(U.A.E), 15:Arabic(Bahrain), 16:Arabic(Qatar)
Azeri	1:Azeri(Latin), 2:Azeri(Cyrillic)
Chinese	1:Chinese(Taiwan), 2:Chinese(PR China), 3:Chinese(Hong Kong S.A.R., P.R.C.), 4:Chinese(Singapore), 5:Chinese(Macau S.A.R.)
Dutch	1:Dutch, 2:Dutch(Belgian)
English	1:English(USA), 2:English(UK), 3:English(Australian), 4:English(Canadian), 5:English(New Zealand), 6:English(Irish), 7:English(South Africa), 8:English(Jamaica), 9:English(Caribbean), 10:English(Belize), 11:English(Trinidad), 12:English(Zimbabwe), 13:English(Philippines)
French	1:French, 2:French(Belgian), 3:French(Canadian), 4:French(Swiss), 5:French(Luxembourg), 6:French(Monaco)
German	1:German, 2:German(Swiss), 3:German(Austrian), 4:German(Luxembourg), 5:German(Liechtenstein)
Italian	1:Italian, 2:Italian(Swiss)
Kashmiri	2:Kashmiri(India)
Korean	1:Korean(Extended Wansung)
Lithuanian	1:Lithuanian, 2:Lithuanian(Classic)
Malay	1:Malay(Malaysia), 2:Malay(Brunei Darussalam)
Nepali	1:Nepali(India)
Norwegian	1:Norwegian(Bokmal), 2:Norwegian(Nynorsk)
Portuguese	1:Portuguese(Brazilian), 2:Portuguese
Serbian	1:Serbian(Latin), 2:Serbian(Cyrillic)
Spanish	1:Spanish(Castilian), 2:Spanish(Mexican), 3:Spanish(Modern), 4:Spanish(Guatemala), 5:Spanish(Costa Rica), 6:Spanish(Panama), 7:Spanish(Dominican Republic), 8:Spanish(Venezuela), 9:Spanish(Colombia), 10:Spanish(Peru), 11:Spanish(Argentina), 12:Spanish(Ecuador), 13:Spanish(Chile), 14:Spanish(Uruguay), 15:Spanish(Paraguay), 16:Spanish(Bolivia), 17:Spanish(El Salvador), 18:Spanish(Honduras), 19:Spanish(Nicaragua), 20:Spanish(Puerto Rico)
Swedish	1:Swedish, 2:Swedish(Finland)
Urdu	1:Urdu(Pakistan), 2:Urdu(India)
Uzbek	1:Uzbek(Latin), 2:Uzbek(Cyrillic)

For WM Devices key customization can also be done in **M3.ini**. To make the changes are affected, must set the install value to '1' and reset the device. Make sure you change the right entry and install value of the other device is '0'. For example, changing MM3 values will not work on the other devices.

APPLICATION MANUAL

[M3SKY_SIDE_KEY]

Install=0
 LEFTDOWN=0
 LEFTUP=0
 RIGHTDOWN=0
 RIGHTUP=0
 Blue=0
 Yellow=0
 SOFT1=0
 SOFT2=0

[MM3_SIDE_KEY]

Install=0
 LEFTSOFT=1
 RIGHTSOFT=1
 SEND=1
 END =1
 GREEN=1
 YELLOW=1
 BACKSPACE=1
 TAB=1
 ESC=1
 SHIFT=1
 SCAN=0
 EnableFKey=0

[M3ORANGE_SIDE_KEY]

Install=0
 LEFTUP=0
 LEFTDOWN=0
 RIGHTDOWN=0
 RIGHTUP =0
 SEND=0
 SOFT1=0
 SCAN=0
 SOFT2=0
 END=0
 ACTION=0
 LEFT=0
 UP=0
 DOWN=0
 RIGHT=0

[M3SMART_SIDE_KEY]

Install=0
 OnlySendEndFunc=1
 VolumeUpKey=0
 VolumeDownKey=0
 RightDownKey=7
 SideUpKey=3
 SendKey=0
 Soft1Key=0
 ScanKey=0
 Soft2Key=0
 EndKey=0
 TabKey=0
 SpaceKey=0
 BkspKey=0
 EnterKey=0

LeftKey=0
 UpKey=0
 RightKey=0
 DownKey=0
 WindowKey=0
 OKKey=0
 ShiftKey=0
 LockKey=0
 F1Key=0
 F2Key=0
 F3Key=0
 F4Key=0
 F5Key=0
 F6Key=0
 F7Key=0
 F8Key=0
 F9Key=0
 F10Key=0

[M3BLACK_SIDE_KEY]

Install=0
 LEFTUP=0
 LEFTDOWN=0
 Camera=0
 SIDESCAN=0
 SEND=0
 SOFT1=0
 SCAN=0
 SOFT2=0
 END=0
 TAB=0
 ENTER=0
 LEFT=0
 UP=0
 DOWN=0
 RIGHT=0
 Only_SendEnd=0

[M3OX10_SIDE_KEY]

Install=0
 LEFTUP=0
 LEFTDOWN=0
 SIDESCAN=0
 Camera =0
 SEND=0
 SOFT1=0
 SCAN=0
 SOFT2=0
 END=0
 TAB=0
 LEFT=0
 UP=0
 DOWN=0
 RIGHT=0
 Only_SendEnd=0

APPLICATION MANUAL

Below are the examples of key setting value of WM devices, if you enter key setting value of device you wish to use, the value will be applied from after reset device.

SKY Key Functions (MC-7101)	0=Default 1=VK_ESCAPE 2=VK_F13 3=VK_F14 4=VK_F17 5=VK_F18 6=VK_SPACE 7=VK_RETURN 8=SIP ON/OFF 9=excute application1 10=excute application2 11=Winodws Key 12=Home 13=PgUp 14=End 15=PgDn 16=None 17=VK_ACTION
MM3 Key Functions	0=None 1=Default 2=SIP ON/OFF 3=VK_APP1 4=VK_APP2 5=VK_RETURN 6=VK_CONTROL 7=VK_SHIFT 8=VK_ESCAPE 9=Launch Program1 10=Launch Program2 11=Launch Program3 12=Launch Program4 13=VK_M3SCAN 14=VK_ACTION
M3ORANGE, OX10 Key Functions	0=Default 1=VK_ESCAPE 2=VK_F13 3=VK_F14 4=VK_F17 5=VK_F18 6=VK_SPACE 7=VK_RETURN 8=SIP ON/OFF 9=excute application1 10=excute application2 f11=Winodws Key 12=Home 13=PgUp 14=End 15=PgDn 16=None 17=.(PERIOD) 18=,(COMMA)
M3SMART Key Functions	0=Default 1=VK_ESCAPE 2=VK_F13 3=VK_F14 4=VK_F17 5=VK_F18 6=VK_SPACE 7=VK_RETURN 8=SIP ON/OFF 9=excute application1 10=excute application2 11=Winodws Key 12=Home 13=PgUp 14=End 15=PgDn 16=VK_ACTION 17=None
M3BLACK Key Functions	0=Default 1=VK_ESCAPE 2=VK_F13 3=VK_F14 4=VK_F17 5=VK_F18 6=VK_SPACE 7=VK_RETURN 8=SIP ON/OFF 9=excute application1 10=excute application2 f11=Winodws Key 12=Home 13=PgUp 14=End 15=PgDn 16=VK_ACTION 17=None 18=.(PERIOD) 19=,(COMMA)

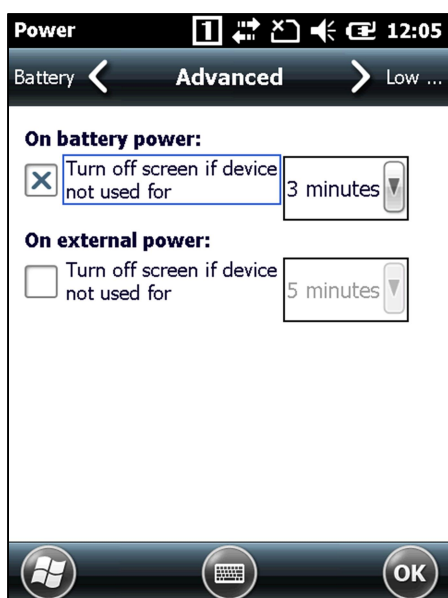
More details on key customization are available on [Support webpage](#).

APPLICATION MANUAL

```
// PowerTimeout - 0:UnInstall 1:Install
// Timeout - 0:Default=2min 1:1min 2:2min 3:3min 4:4min 5:5min
// ACTimeOut - 0:Default=5min 1:1min 2:2min 3:5min 4:10min 5:15min 6:30min
// CheckTimeOut, CheckACTimeOu - 0:Uncheck 1:Check
[POWER_TIMEOUT]
Install=0
ACInstall=0
CheckTimeOut=0
CheckACTimeOut=0
Timeout=0
ACTimeOut=0
```

Power_Timeout configures the power options which is also available in

[Start] → [Settings] → [Power] → [Advanced]



CheckTimeOut=1 checks the checkbox of 'On battery power' and Timeout sets the time

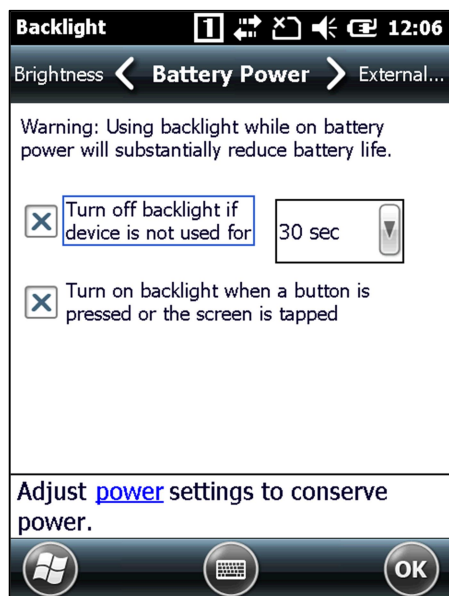
CheckACTimeOut=1 checks the checkbox of 'On external power' and ACTimeOut sets the time

To use these options, make sure that the install value of corresponding item is '1'

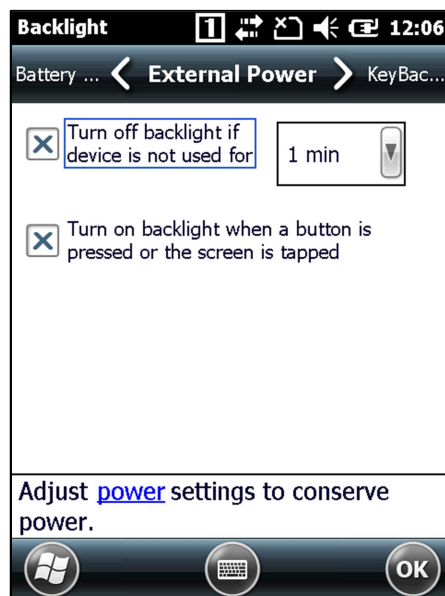
```
// BackLightTimeout - 0:UnInstall 1:Install
// Timeout - 0:Default=30sec 1:10sec 2:30sec 3:1min 4:2min 5:3min 6:4min 7:5min
// ACTimeOut - 0:Default=1min 1:1min 2:2min 3:3min 4:4min 5:5min 6:6min 7:7min
8:8min 9:9min 10:10min
[BACKLIGHT_TIMEOUT]
Install=0
ACInstall=0
CheckTimeOut=0
CheckACTimeOut=0
Timeout=0
ACTimeOut=0
```

BACKLIGHT_TIMEOUT configures the backlight options which is also available in **[Start] → [Settings] → [System] → [Backlight]**

APPLICATION MANUAL



CheckTimeOut= 1 checks the checkbox of 'Turn off backlight...' and TimeOut sets the time.



CheckACTimeOut=1 checks the checkbox of 'Turn off backlight...' in 'External Power' tab and ACTimeOut sets the time.

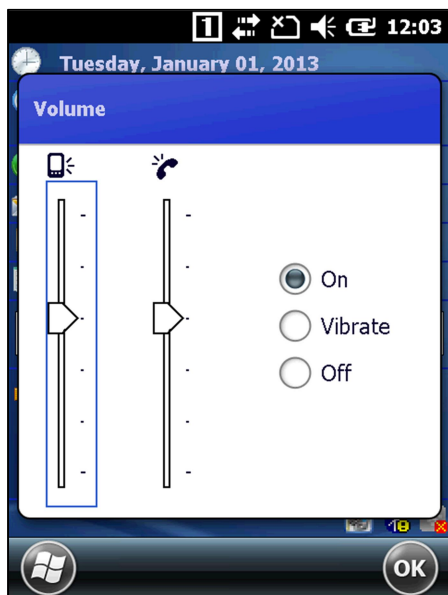
To use these options, make sure that the install value of corresponding item is '1'

```
// BackLight      - 0:UnInstall 1:Install
// Level : 0      - 9
[BACKLIGHT_LEVEL]
Install=0
Level=4
```

BACKLIGHT_LEVEL controls the brightness of the backlight which is also available in [Start] → [Settings] → [System] → [Backlight] → [Brightness]

```
// Volume        - 0:UnInstall 1:Install
// Mute           - 0:UnInstall 1:Install
// Volume / PhoneVolume - 0: 0x00000000 1:0x33333333 2:0x66666666 3:0x99999999
4:0xCCCCCCCC 5:0xFFFFFFFF
[VOLUME]
Install=0
PhoneInstall=0
Volume=3
PhoneVolume=3
Mute=0
```

APPLICATION MANUAL



Volume control option is available in 6 levels as shown in the picture

Volume refers to the device sound (left)

Phone Volume refers to the phone speaker volume (right)

Mute will mute the both device volume and speaker volume (same function as off button at the bottom)

The following options are used to run XML files in startup. File names are fixed to **Network.xml**, **GPRS.xml** and **ProxyServer.xml** for network, GPRS and proxy server respectively. With this option, XML files will automatically setup the connection.

[SET_NETWORK]

Install=0

[SET_GPRS]

Install=0

[SET_PROXYSERVER]

Install=0

[IE]

Install=0

StartPage=<http://www.google.com/pda>

This option sets the internet homepage.

[CAB_INSTALL]

Install=0

InstallFile=\\Flash Disk\\Driver\\Test.CAB

User can add CAB file installation in startup after hard/soft reset. If you wish to auto install more than one CAB file, you can add in the same format; for example, **[CAB_INSTALL_2]** and **[CAB_INSTALL_3]**. It supports up to 100 CAB files for auto installation at the startup. However, you need to consider the flash disk size.

[GPRS_INSTALL]

Install=1

InstallFile=\\Flash Disk\\Driver\\WWAN_Manager.CAB

Install WWAN Manager automatically after hard/soft reset.

[CF_INSTALL]

Install=0

InstallFile=\\Flash Disk\\Driver\\NETCFv35.wm.armv4i.cab

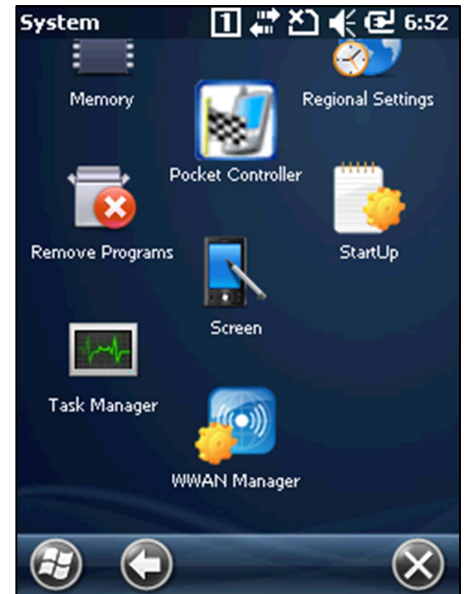
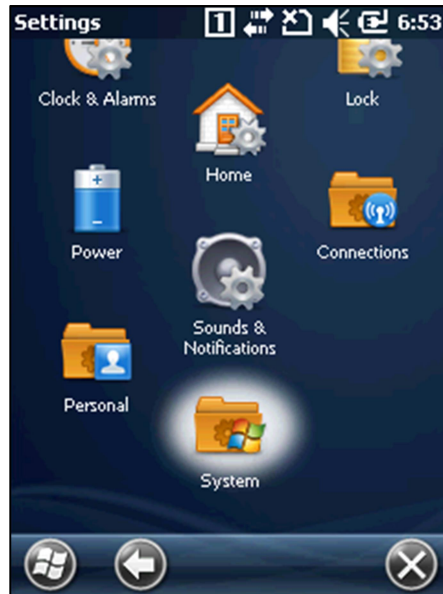
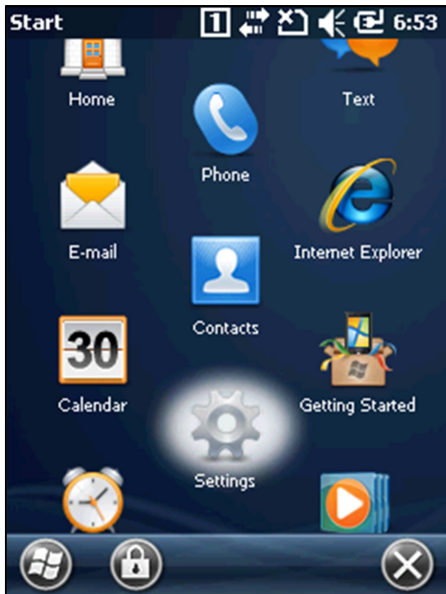
APPLICATION MANUAL

Set the install value to '1' if you wish to install .NET Compact Framework ver. 3.5 automatically after hard/soft reset. NETCF ver. 2.0 is pre-installed on the device.

[VISUALINI_INSTALL]

```
Install=1  
InstallFile=\\Flash Disk\\Driver\\VisualINI.CAB
```

Installation options for **VisualINI**. **VisualINI** provides the same controllability as the **M3.ini** but all options can be configured on the device rather than opening with Notepad. You will see 'StartUp' icon in **[Settings]→[System]** as shown in the below picture if **VisualINI** is installed.



There are 13 tabs available in **VisualINI (StartUp)**; **StartUp** tab to DLL tab.

[REBOOT]

```
Install=0
```

This option controls auto reset when **McStart.exe** is run.

[INI_LOCK]

```
Install=0  
PassWord=M3Mobile
```

This option assigns password for **VisualINI**.

[SET_TIME]

```
Install=0  
SoftReset=0  
GPS=1  
GPSTimeOut=600  
NTP=1  
TimeServer=time.bora.net  
TimeOut=1200
```


APPLICATION MANUAL

This is part for time setting for device via GPS or Network Time Protocol. You can choose to use or not to via install setting. Soft reset setting is part to decide if time is needed to set whenever device is reset.

GPS setting is to decide if user wishes to set time via GPS, GPS TimeOut is standby time from GPS use until time set, which will be set by seconds.

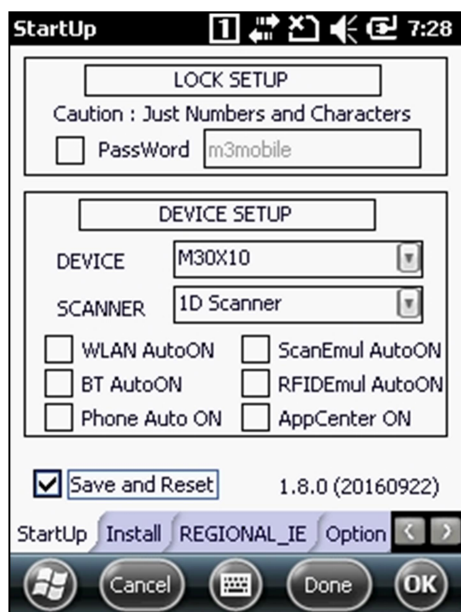
NTP gathers defined time data from server by TimeServer. Timeout defines standby time when brings in time data from NTP Server via network.

.

APPLICATION MANUAL

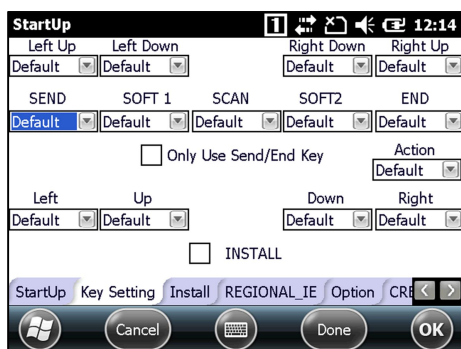
1.3 VisualINI

1. StartUp Page



- **LOCK SETUP:** If Password clicks, password input page will be showed up every time when program starts
 - User can set whether to use password
 - Case-sensitive, non-usable special character
 - Password can be used with alphabet and numbers only.
 - **Initial Password:** m3mobile
- **DEVICE SETUP**
 - **DEVICE:** Device model setting
 - **SCANNER:** Device engine type setting
 - **WLAN ON:** Runs **WLAN** automatically when booting.
 - **BT ON:** Runs **Bluetooth** automatically when booting.
 - **Phone ON:** Runs **Phone** automatically when booting.
 - **ScanEmul ON:** Runs **ScanEmul** automatically when booting.
 - **RFIDEmul ON:** Runs **RFIDEmul** automatically when booting.
 - **AppCenter On:** Runs **AppCenter** Automatically when booting
 - **Save and Reset:** Reboots after the Startup setting.

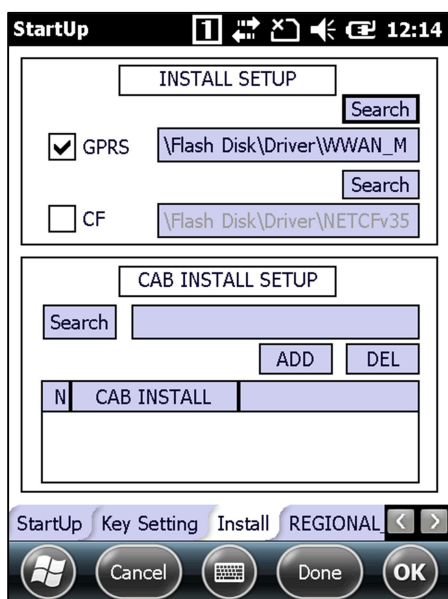
2. SideKey Page



- **SIDEKEY SETUP Page**
- **Key type**
 - **M3SKY:** Default / VK_ESCAPE / VK_F13 / VK_F14 / VK_F16 / VK_F17 / SIP on/off / VK_RETURN
 - **MM3:** None / Default / SIP ON/OFF / VK_APP1 / VK_APP2 / VK_RETURN / VK_CONTROL / VK_SHIFT / VK_ESCAPE / Launch Program1 / Launch Program2 / Launch Program3
 - **M3SMART:** Default / VK_ESCAPE / VK_F13 / VK_F14 / VK_F17 / VK_F18 / VK_SPACE / VK_RETURN / SIP ON/OFF / excute application1 / excute application2 / Winodws Key / Home / PgUp / End / PgDn / VK_ACTION / None
 - **M3Orange:** Default / VK_ESCAPE / VK_F13 / VK_F14 / VK_F16 / VK_F17 / VK_SPACE / SIP on/off / Application 1/ Application 2/ Windows / Home / PgUp / End / PgDn / Done / VK_ACTION / ,(PERIOD) / ,(COMMA)
- **Install:** Sets up the user-defined SideKey when booting

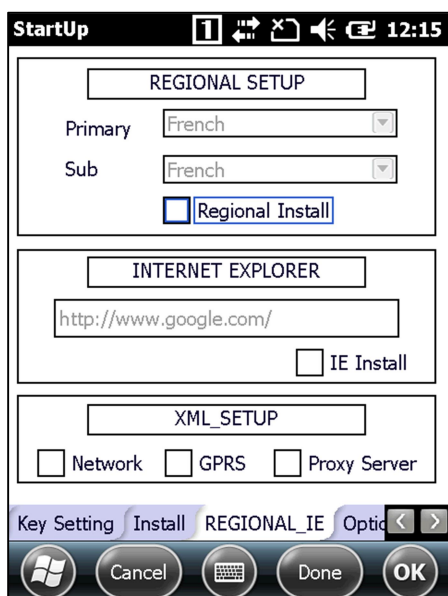
APPLICATION MANUAL

3. Install Page



- **CAB file setup Page**
- **INSTALL SETUP**
 - **GPRS: WWAN_Manager** installation setting
 - **CF: .Net CF3.5** installation setting
- **CAB INSTALL SETUP**
 - Set up the **CAB** file what user wants to install
 - **Search:** Searches file within folder
 - **ADD:** Adds the selected file to a list box
 - **DEL:** Deletes the selected file in a list box

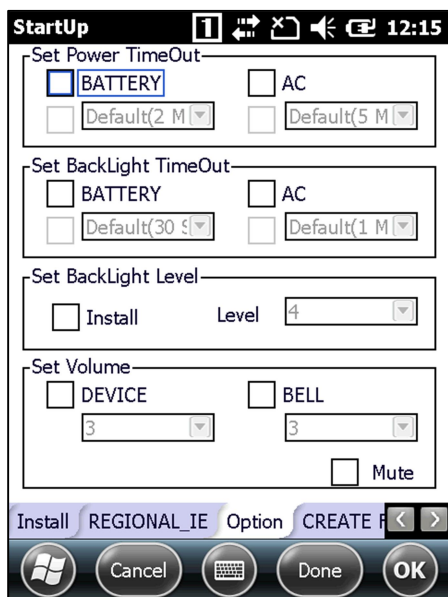
4. Regional_SetUp Page



- **Local language and Internet / XML setup Page**
- **REGIONAL SETUP**
 - **Primary:** Major language setup
 - **Sub:** Subsidiary language setup
 - **Regional Install:** whether to apply user defined
- **INTERNET EXPLORER**
 - Internet start page setup
 - **IE Install:** Applies user defined Startup page
- **XML_SETUP**
 - The file name is fixed as **Network.XML/GPRS.XML/ProxyServer.XML**
 - Check the file what user wants to install

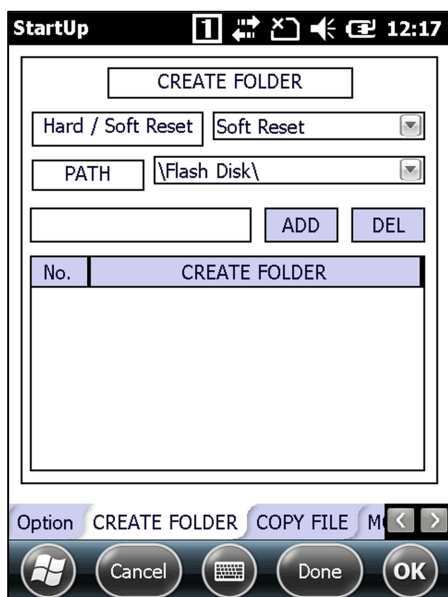
APPLICATION MANUAL

5. Option Page



- **Power / Backlight / Volume setup Page**
- **Power TimeOut**
 - **BATTERY:** Set up the power timeout in using battery
 - **AC:** Set up the power timeout in using AC power
- **BackLight TimeOut**
 - **BATTERY:** Set up the light timeout in using battery
 - **AC:** Set up the light timeout in using AC power
- **BackLight Level:** Set up the backlight level when booting
- **Volume**
 - **DEVICE:** Set up the main volume when booting
 - **BELL:** Set up the call volume when booting
 - **Mute:** Set up the mute when booting

6. Create Folder Page



- **Setup the Create Folder when booting**
- **Hard / Soft Reset:** Set up hard reset / soft reset
- **PATH:** Set up the folder path
- **ADD:** Add folder to a list box
- **DEL:** Delete folder in a list box

APPLICATION MANUAL

7. CopyFile Page

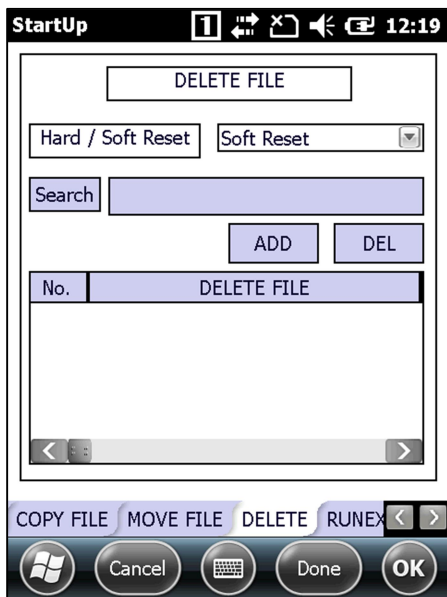
- **Setup the Copy file when booting**
- **Hard / Soft Reset:** Set up hard reset / soft reset
- **Search:** Search files to copy
- **PATH:** Set up the file path to be copied
- **Sleep:** Set up sleep time after copy
- **ADD:** Add **Copyfile** to a list box
- **DEL:** Delete **Copyfile** in a list box

8. MoveFile Page

- **Setup the Move file when booting**
- **Hard / Soft Reset:** Setup hard reset / soft reset
- **Search:** Search file to move
- **PATH:** Set up the file path to be moved
- **Sleep:** Set up sleep time after move
- **ADD:** Add **Movefile** to a list box
- **DEL:** Delete **Movefile** in a list box

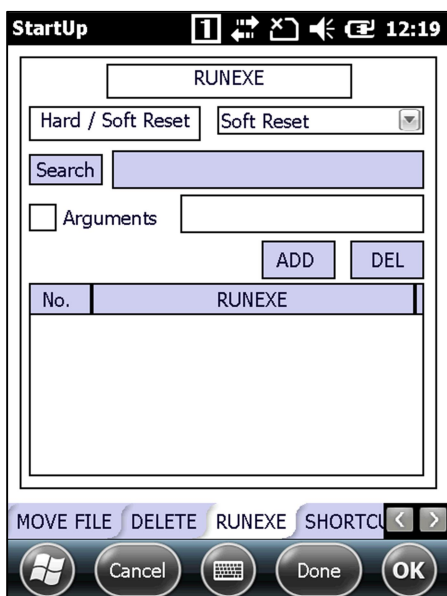
APPLICATION MANUAL

9. DeleteFile page



- **Setup the Delete file when booting**
- **Hard / Soft Reset:** Setup hard reset / soft reset
- **Search:** Search file to delete
- **ADD:** Add **Deletefile** to a list box
- **DEL:** Delete **Deletefile** in a list box

10. RunExe Page



- **Setup the RunExe when booting**
- **Hard / Soft Reset:** Setup hard reset / soft reset
- **Search:** Search file to auto-run
- **Arguments:** Setup auto-run file parameter
- **ADD:** Add **RunExe** to a list box
- **DEL:** Delete **RunExe** in a list box

APPLICATION MANUAL

11. Shortcut Page

- **Setup the ShortCut when booting**
- **Hard / Soft Reset:** Setup hard reset / soft reset
- **Search:** Search file to create the shortcut
- **PATH:** Setup the path to create the shortcut
- **ADD:** Add **ShorCut** to a list box
- **DEL:** Delete **ShortCut** in a list box

12. Regsetvalue Page

- **Setup the Registry value when booting**
- **Hard / Soft Reset:** Setup hard reset / soft reset
- **Path Setting:** Set up the registry path
- **NAME:** Input the registry name
- **VALUE:** Input the registry value
- **ADD:** Add **RegSetValue** to a list box
- **DEL:** Delete **RegSetValue** in a list box

APPLICATION MANUAL

13. DllRegisterServer Page

The screenshot shows a software interface for managing DLL registration. The title bar indicates the application is in 'StartUp' mode. The main content area includes a text field for the server name, reset options, a search function, and a list of registered servers. The bottom navigation bar includes tabs for different settings and a set of action buttons.

- **Setup the DLLREGISTERSERVER when booting**
- **Hard / Soft Reset:** Setup hard reset / soft reset
- **Search:** Search **dll** files to register to server
- **ADD:** Add **DllRegisterServer** to a list box
- **DEL:** Delete **DllRegisterServer** in a list box

APPLICATION MANUAL

CHAPTER 2. STARTUP CE GUIDE

2.1 StartUp.inf

In StartUp.inf, user can write commands to copy, move or delete files, or to create folder, shortcut to a specific application or registry values. Moreover, DLL register, unregister and auto run of an executable file is also possible.

Here is an example of CopyFile.

```
CopyFile=/H "\\Flash Disk\\Scanner\\Scanner.dll" "\\Pages\\Scanner_TEST.dll"
```

This command is will copy Scanner.dll which is located in WFlash Disk WScanner folder to WPages folder and rename it to **Scanner_TEST.dll** after hard reset (/H command, /S is used for soft reset).

For all commands (copy, delete, etc.), user can select when to execute the command; after hard reset or soft reset. In addition, for copy and move commands, user can rename the file as show in the above example.

Command structure and example is described below:

```
// CopyFile=[execute type] [path to original file] [path to copy]
Eg: Example shown above.
// MoveFile=[execute type] [path to original file] [path to move]
Eg: MoveFile=/s "\\My Documents\\a.cab" "\\Flash Disk\\a.cab"
//DeleteFile=[execute type] [path to the file to delete]
Eg: DeleteFile=/H "\\Flash Disk\\a.lnk"
//CreateFolder=[execute type] [path to the folder to create]
Eg: CreateFolder=/h "\\My Documents\\hardreset"
//ShortCut=[execute type] [path to original file] [path to the quick link]
Eg: ShortCut=/s "\\Flash Disk\\a.exe" "\\My Documents\\a.lnk"
//RegSetValue=[execute type] [data type (string, dword, etc)] [[path] : value]
Eg: RegSetValue=/s string [HKEY_CURRENT_USER\\MCSetting\\Scanner]test : "test"
Eg: RegSetValue=/s dword [HKEY_CURRENT_USER\\MCSetting\\Scanner]intTest : 68
//DllRegisterServer= [execute type] [path to the file to register]
Eg: DllRegisterServer =/h "\\Flash Disk\\NumKeybd.dll"
//DllRegisterServer= [execute type] [path to the file to unregister]
Eg: DllUnregisterServer =/h "\\Flash Disk\\NumKeybd.dll"
//RunExe =[execute type] [path to the file to execute] [arguments]
Eg: RunExe =/s "\\Flash Disk\\mouse.exe"
```

APPLICATION MANUAL

2.2 M3.ini

2.2.1 Common Functions

If not commented separately, '0' represents disable and '1' represents enable.

```
// COMMON FUNCTIONS
// Type(REQUIREMENT)- 0:MC6300S, 1:MC6400S, 2:MC6500S, 3:MC6100S, 4:M3T,
                        5:M3POS, 6:M3SMART, 7:M3OX10, 8: M3 UL10, 9: M3BLACK
// Scanner            - 1: 1D scanner, 3: 2D Scanner, 5: LR Scanner
// Display OFF Mode - 0:Default, 1: shot(sleep), long(display off),
                        2: short(display off), long(sleep)

[DEVICE_TYPE]
Type=7
Scanner=1
LCDMode=0
```

Above is Type section, Device information need to be entered. LCD Mode can only be used on M3 GREEN and M3T.

Device information needs to be declared. LCD Mode is only applicable on M3 Green and M3T.

[WLAN]	[BT_INIT]
Install=1	Install=1
AutoON=0	AutoON=0
Domain=0	

Install part above allows user to decide whether to use WLAN and BT or not.

Setting AutoOn value to '1' will start **WLAN** and **Bluetooth** automatically after hard/soft reset. WLAN regulatory domain: FCC (Americas), ETSI (Europe), TELEC (Japan), WW (Worldwide), KCC (Korea), can be set in M3.ini. Domain can be changed except for old M3 MT10 (M3T), M3 PS10 (POS) and M3 ST10 (Smart), Summit type. If the AutoON set 0, the device does not try to connect.

```
[SCANNER]
Install=1
EmulAutoON=0
1D_ExeFile=\Flash Disk\Scanner\M3ScanTest.EXE
1D_EmulFile=\Flash Disk\Scanner\ScanEmul.exe
2D_ExeFile=\Flash Disk\Imager\M3ScanTest.EXE
2D_EmulFile=\Flash Disk\Imager\ImagerEmul.exe
2D_EmulFile00=\Flash Disk\Imager\ScanEmul.exe
LR_ExeFile=\Flash Disk\LRScanner\LRScanEmul.EXE
LR_EmulFile=\Flash Disk\LRScanner\LRScanEmul.exe
```

Setting EmulAutoOn value to '1' will start [ScanEmul/ImagerEmul](#).. automatically after soft/hard reset.

```
[CAMERA]
Install=1
ExeFile=\Flash Disk\Camera\Camera.exe
```

If Install value is set as '1', Short-Cut to execute ExeFile will be produced on Desktop Screen.

APPLICATION MANUAL

[RFID]

```
AutoON=0  
ExeFile=\Flash Disk\RF_ID\RfidEmul.exe
```

Setting AutoOn value to '1' will start [RfidEmul](#) automatically after soft/hard reset.

[APPCENTER]

```
AutoOn=0  
ExeFile=\Flash Disk\AppCenter\M3AppCenterCe.exe
```

Setting AutoOn value to '1' will start [AppCenter](#) automatically after soft/hard reset.

[IE]

```
Install=0  
StartPage=http://www.google.com/
```

Start page for Internet Explorer can be set.

[WALLPAPER]

```
Install=0  
Tile=0  
Desktop=\Flash Disk\Startup\7.bmp
```

Wall paper for Desktop screen can be set. Tile does set BMP file which set on Desktop as Tile type or not.

[TIME_ZONE]

```
Install=0  
Display=(GMT+01:00) Brussels, Copenhagen, Madrid, Paris  
AutoDST=0
```

TimeZone can be set. From Display by set related GMT zone, AutoDST can decide whether to use Daylight Saving Time or not.

APPLICATION MANUAL

[REGIONAL]

Install=0
PrimaryLanguage=12
SubLanguage=1

Users can select primary and sub languages. To make the changed applied, must set install value to '1' and reset the device. Refer to below table for primary and sub languages.

[PrimaryLanguage]

54:Afrikaans	28:Albanian	1:Arabic	43:Armenian
77:Assamese	44:Azeri	45:Basque	35:Belarusian
69:Bengali	2:Bulgarian	3:Catalan	4:Chinese
26:Croatian	5:Czech	6:Danish	101:Divehi
19:Dutch	9:English	39:Estonian	56:Faeroese
41:Farsi	11:Finnish	12:Frence	55:Georgian
7:German	8:Greek	71:Gujarati	13:Hebrew
57:Hindi	14:Hungarian	15:Icelandic	33:Indonesian
16:Italian	17:Japanese	77:Kannada	96:Kashmiri
63:Kazak	87:Konkani	18:Korean	38:Latvian
39:Lithuanian	47:Macedonian	62:Malay	76:Malayalam
88:Manipuri	78:Marathi	80:Mongolian	97:Nepali
20:Norwegian	72:Oriya	21:Ploish	22:Portuguese
70:Punjabi	24:Romanian	25:Russian	79:Sanskrit
26:Serbian	89: Sindhi	27:Slovak	36:Slovenian
10:Spanish	65:Swahili	29:Swedish	90:Syriac
73:Tamil	68:Tatar	74:Telugu	30:Thai
31:Turkish	34:Ukrainian	32:Urdu	67:Uzbek
42:Vietnamese			

[Sub-Language]

Arabic	1:Arabic(Saudi Arabia), 2:Arabic(Iraq), 3:Arabic(Egypt), 4:Arabic(Libya), 5:Arabic(Algeria), 6:Arabic(Morocco), 7:Arabic(Tunisia), 8:Arabic(Oman), 9:Arabic(Yemen), 10:Arabic(Syria), 11:Arabic(Jordan), 12:Arabic(Lebanon), 13:Arabic(Kuwait), 14:Arabic(U.A.E), 15:Arabic(Bahrain), 16:Arabic(Qatar)
Azeri	1:Azeri(Latin), 2:Azeri(Cyrillic)
Chinese	1:Chinese(Taiwan), 2:Chinese(PR China), 3:Chinese(Hong Kong S.A.R., P.R.C.), 4:Chinese(Singapore), 5:Chinese(Macau S.A.R.)
Dutch	1:Dutch, 2:Dutch(Belgian)
English	1:English(USA), 2:English(UK), 3:English(Australian), 4:English(Canadian), 5:English(New Zealand), 6:English(Irish), 7:English(South Africa), 8:English(Jamaica), 9:English(Caribbean), 10:English(Belize), 11:English(Trinidad), 12:English(Zimbabwe), 13:English(Philippines)
French	1:French, 2:French(Belgian), 3:French(Canadian), 4:French(Swiss), 5:French(Luxembourg), 6:French(Monaco)
German	1:German, 2:German(Swiss), 3:German(Austrian), 4:German(Luxembourg), 5:German(Liechtenstein)
Italian	1:Italian, 2:Italian(Swiss)
Kashmiri	2:Kashmiri(India)
Korean	1:Korean(Extended Wansung)

APPLICATION MANUAL

Lithuanian	1:Lithuanian, 2:Lithuanian(Classic)
Malay	1:Malay(Malaysia), 2:Malay(Brunei Darussalam)
Nepali	1:Nepali(India)
Norwegian	1:Norwegian(Bokmal), 2:Norwegian(Nynorsk)
Portuguese	1:Portuguese(Brazilian), 2:Portuguese
Serbian	1:Serbian(Latin), 2:Serbian(Cyrillic)
Spanish	1:Spanish(Castilian), 2:Spanish(Mexican), 3:Spanish(Modern), 4:Spanish(Guatemala), 5:Spanish(Costa Rica), 6:Spanish(Panama), 7:Spanish(Dominican Republic), 8:Spanish(Venezuela), 9:Spanish(Colombia), 10:Spanish(Peru), 11:Spanish(Argentina), 12:Spanish(Ecuador), 13:Spanish(Chile), 14:Spanish(Uruguay), 15:Spanish(Paraguay), 16:Spanish(Bolivia), 17:Spanish(El Salvador), 18:Spanish(Honduras), 19:Spanish(Nicaragua), 20:Spanish(Puerto Rico)
Swedish	1:Swedish, 2:Swedish(Finland)
Urdu	1:Urdu(Pakistan), 2:Urdu(India)
Uzbek	1:Uzbek(Latin), 2:Uzbek(Cyrillic)

[RESTORE]

```
Install=0
ExeFile=\Flash Disk\xPIMS\MS-Backup.exe
Type=0
Reset= 0
```

Backup data can be restored. Set ExeFile path where Restore program is stored. If All Data has back-up set Type as '0', and if only PIMS data has back-up set Type as '1'. Reset devices whether to reset device after Restore. Backup program is not included in new M3 devices as a default [based on CE 6.0 OS (M3 OX10, M3 BLACK, M3 UL10)].

2.2.2 M3 GREEN Setting

```
Function : 0=Default 1=VK_ESCAPE 2=VK_F20 3=VK_F21 4=VK_F22(S Button)
          5=VK_F23(C Button) 6=FKey 7=SIP
```

[M3GREEN_LEFT_SIDE_KEY]

```
Install=0
FKeyTray=1
FMode=0
LSideDown=6
LSideUp=1
```

M3 GREEN's key setting can be set. FKeyTray can be used to device to display if 'F' icon to be placed on tray menu, if FMODE is set to '1', Number keys 1,2,3,4 is to be used as F1,F2,F3,F4. LSideDown and LSideUp can be set as wanted function key.

[IRDA_INIT]

```
Install=0
```

Decides if IRDA is to be used for M3 GREEN or not.

APPLICATION MANUAL

[EXT_MODE2]

Enable=0

Decides if external device (ex.RFID) is to be used for M3 GREEN or not.

2.2.3 M3 MT10 (M3T) Setting

```
Function : 0=Default 1= SIP ON/OFF 2=Kor/Eng 3=Windows Key 4=VK_F20 5=VK_F22
           6=VK_F23 7=Space 8=Back Space 9=Tab 10=Enter (VK_RETURN) 11=Up 12=Down
           13=Left 14=Right 15=ESC 16=Internet Explorer 17=Command Prompt
           18=Wordpad 19=Media Player 20=Task Manager 21=Comma 22=Decimal
           23=None
```

[M3T_SIDE_KEY]

Install=0

Camera=0

Scanner=0

VolUp=0

VolDown=0

// Select one '1. Phone version' or '2. no phone version'

// 1. Phone Version

LeftSoft=0

RightSoft=0

// 2. No phone version

F1=0

F2=0

F3=0

F4=0

M3 T's key setting can be changed as above method. The important thing is that if device has phone option, softkeys except phone buttons(Send & End) can be changed, key setting for device with phone follows '1.Phone Version'. And if device does not include phone, setting is to be done via '2.No Phone Version'.

2.2.4 M3 PS10 (POS) Setting

```
Function : 0=SIP ON/OFF 1=Kor/Eng 2=Windows Key 3=VK_F1 4=VK_F2 5=VK_F3
           6=VK_F4 7=VK_F5 8=VK_F6 9=VK_F22 10=Space 11=Up 12=Down 13=Left
           14=Right 15=ESC 16=FEED 17=Internet Explorer 18=Command Prompt
           19=Wordpad 20=Media Player 21=Task Manager 22=Not Use 255=Default
```

[M3POS_SIDE_KEY]

Install=0

ESC=255

F1=255

F2=255

Printer=255

Scanner=255

VolDown=255

VolUp=255

Send=255

APPLICATION MANUAL

End=255

Above are key setting example for M3 POS, Keys are to be worked as set, once Install is set as '1'.

IsMMC: 1 (MMC) , 0 (SUMMIT)

```
[WLAN_TYPE]
IsMMC=0
// M3POS
```

Make sure correct WLAN card type between MMC and Summit.

2.2.5 M3 ST10 (SMART) setting

```
//KeyType Select

//0 (Alpha Numeric_Keypad)
//1 (Qwerty_Keypad)
//2 (Numeric_Keypad)
//Default Set Install = 0 (KOR = Numeric_Keypad / Eng = AlphaNumeric_Keypad)

[KEY_TYPE]
Install=0
KeyType=0
```

Key Type for current SMART device need to set.

```
Function : 0:Default 1:Disable 2:Sip On/Off 3:Kor/Eng 4:Windows 5:F1 6:F2 7:F3
           8:F4 9:F5 10:F6 11:F7 12:F8 13:F9 14:F10 15:F20 16:F22 17:F23
           18:Space 19:Up 20:Down 21:Left 22:Right 23:ESC 24:COMMA(,)
           25:Period(.) 26:Internet Explorer 27:Command Prompt 28:Microsoft
           WordPad 29:Media Player 30: Task Manager 31:Keystone Correction

[KEYSELECT]
Install=0
F1Key=0
F2Key=0
F3Key=0
F4Key=0
F5Key=0
F6Key=0
F7Key=0
F8Key=0
F9Key=0
F10Key=0
TabKey=0
SpaceKey=0
BkspKey=0
EnterKey=0
*Key=0
#Key=0
SideUpKey=0
RightDownKey=0
UpKey=0
DownKey=0
LeftKey=0
RightKey=0
Soft1Key=0
Soft2Key=0
```

Above are the key setting example of M3 SMART. Once Install is set as '1', key will work as setting.

APPLICATION MANUAL

2.2.6 M3 OX10 CE(Orange Plus CE; OX10 CE) setting

```
//KeySetting Chagne
//Install = 0 <Default KeySetting>
// 0:Default 1:Disable 2:Sip On/Off 3:Window Key 4:F20
// 5:F22 6:F23 7:Space 8:Back Space 9:TAB 10:Enter 11:Up 12:Down 13:Left
// 14:Right 15:ESC 16:COMMA 17:PERIOD 18:Internet Explorer 19:Command Prompt
// 20:Microsoft WordPad 21:Media Player 22:Task Manager
// 23:Keystone Correction 25:Camera execution 52:touch lock

[M3OX10_KEY]
Install=0
SendKey=0
EndKey=0
VolumeUpKey=0
VolumeDownKey=0
RightUpKey=0
RightDownKey=0
Soft1Key=0
Soft2Key=0
ScanKey=0
```

Above are the key setting example of M3 OX10 CE. Once Install is set as '1', key will work as setting.

2.2.7 M3 UL10 setting

```
//KeySetting Chagne
//Install = 0 <Default KeySetting>
// 0:Default 1:Disable 2:Sip On/Off 3:Window Key 4:F20
// 5:F22 6:F23 7:Space 8:Back Space 9:TAB 10:Enter 11:Up 12:Down 13:Left
// 14:Right 15:ESC 16:COMMA 17:PERIOD 18:Internet Explorer 19:Command Prompt
// 20:Microsoft WordPad 21:Media Player 22:Task Manager
// 23:Keystone Correction 25:Camera execution 52:touch lock

[UL10_KEY]
Install=0
GreenKey=0
RedKey=0
Soft1Key=0
Soft2Key=0
ScanKey=0
F1Key=0
F2Key=0
F3Key=0
F4Key=0
F5Key=0
F6Key=0
F7Key=0
F8Key=0
F9Key=0
F10Key=0
```

Above are the key setting example of M3 UL10. Once Install is set as '1', key will work as setting.

APPLICATION MANUAL

2.2.8 M3 BK10 CE(BLACK) setting

```
//KeySetting Chagne
//Install = 0 <Default KeySetting>
// 0:Default 1:Disable 2:Sip On/Off 3:Window Key 4:F20
// 5:F22 6:F23 7:Space 8:Back Space 9:TAB 10:Enter 11:Up 12:Down 13:Left
// 14:Right 15:ESC 16:COMMA 17:PERIOD 18:Internet Explorer 19:Command Prompt
// 20:Microsoft WordPad 21:Media Player 22:Task Manager
// 23:Keystone Correction 25:Camera execution 52:touch lock
```

[M3Black_KEY]

Install=0	SCANKEY=0
BLUEKEY=0	VOLUPKEY=0
REDKEY=0	VOLDOWNKEY=0
SOFT1KEY=0	SIDESCANKEY=0
SOFT2KEY=0	CAMERAKEY=0

Above are the key setting example of M3BLACK. Once Install is set as '1', key will work as setting.

```
// Install : 0(disabled), 1(enabled), PatchFile : [path to the file to execute]
[argements]

[PATCH]
Install=0
PatchFile="\Flash Disk\Patch\Patch.exe" "1"

// Install : 0(disabled), 1(enabled),
[REBOOT]
Install=0
```

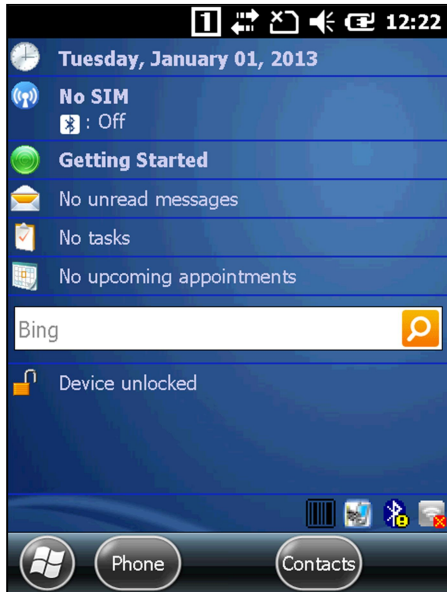
Patch can install the patch file. When finishing the Startup program, Reboot can reset automatically
To apply, Please set Install to '1' and it only work after clean boot.

APPLICATION MANUAL

CHAPTER 3. SCANNER

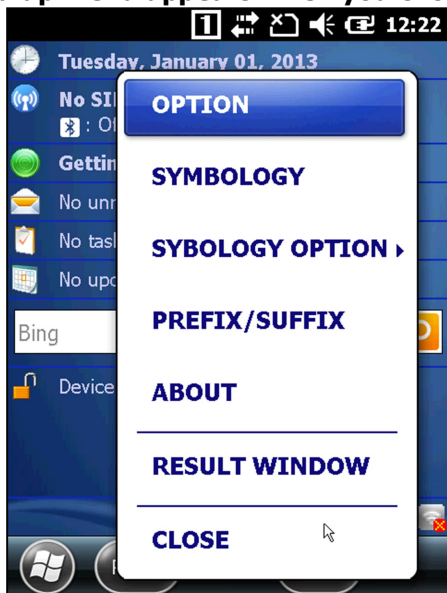
3.1 ScanEmul.exe

1. Main Page



- **ScanEmul** is properly launched if you can see **ScanEmul** tray icon at the bottom

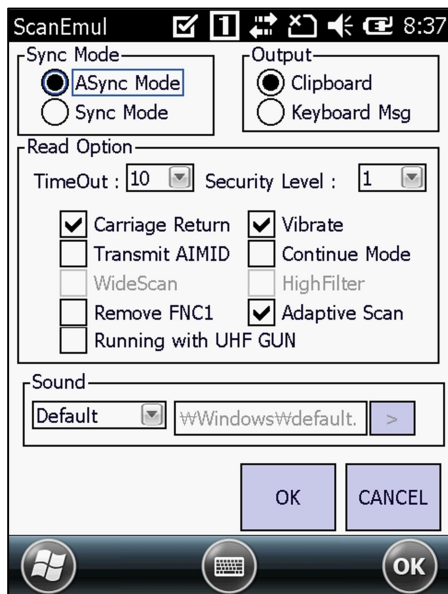
2. Pop-up menu appears when you click the icon



- **Option:** Configures general Emulator options
- **Symbology:** Configures options Regarding Symbology Option
- **Symbology Option:** Configures options Regarding Detail Symbology Option
- **Prefix / Suffix:** Enter data or command at the front or end of barcode data
- **About:** Information of **ScanEmul**
- **Result Window:** Tests reading of barcodes
- **Close:** Close the program

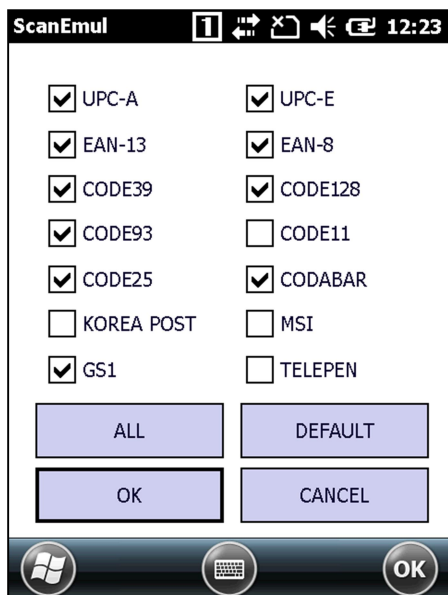
APPLICATION MANUAL

3. Option



- **SyncMode**
 - **ASync:** Emits beam while the scan button is pressed, limited by the TimeOut
 - **Sync:** Emits beam for TimeOut period
- **Output**
 - **Clipboard:** Outputs the result to clipboard
 - **keyboard Msg:** Outputs the result one by one as typing on keyboard
- **Reading Option**
 - **Time Out:** Beam emitting duration
 - **Carriage Return:** Send **VK_RETURN** message which indicates 'Enter key' after scanning
 - **Vibrate:** Vibrate after a successful scan. Only valid for terminals with phone module in M3 SKY
 - **Transmit AIMID:** Output AIM ID of the barcode at the front of the data
 - **Continue Mode:** Emits beam constantly even after reading
 - **Remove FNC:** Output Barcode Data except for FNC character
 - **Adaptive Scan:** Enable Adaptive Scan
- **Sound**
 - **Default:** default sound after a successful scan
 - **Beep:** Beeps after a successful scan
 - **No Sound:** No sound after a successful scan
 - **Wav:** User defined wav sound

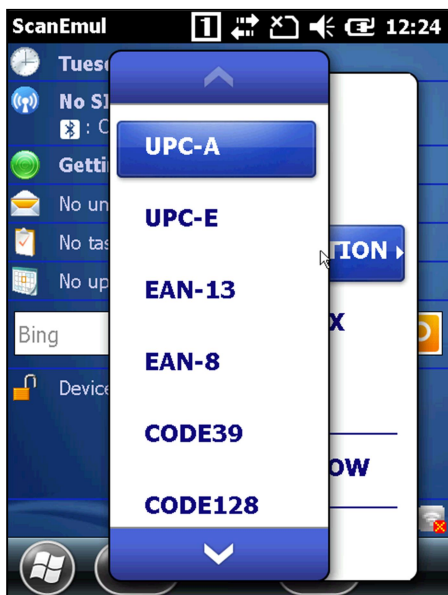
4. Symbology



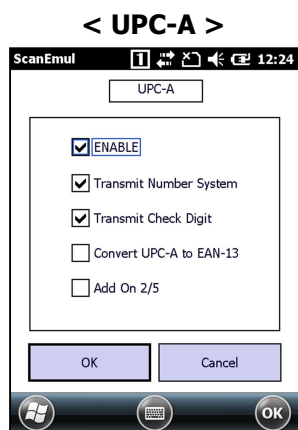
- Enable or disable 14 different types of barcode
- **ALL:** Select all barcode type
- **Default:** Select the default information of barcode type
- **OK :** The selected barcode types Apply to ScanEmul
- **CANCEL :** cancel the PopUp Menu to select barcode type

5. Symbology Option

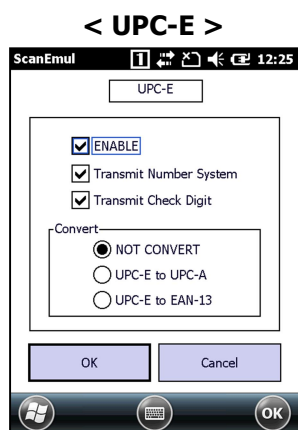
APPLICATION MANUAL



- Advanced configuration for each barcode
- Enter advanced settings for each barcode type by click on them



- **ENABLE:** Enable barcode decoding
- **Transmit Number System:** Front most number output option
- **Transmit Check Digit:** Add Check Digit to the output data
- **Convert UPC-A as EAN-13:** Converts **UPC-A** to **EAN13** by adding '0' at the front
- **Add On 2/5:** Option to read two consecutive barcodes when **UPC-A** types have neighboring additional barcodes (2 and 5 spaces)



- **ENABLE:** Enable barcode decoding
- **Transmit Number System:** Front most number output option
- **Transmit Check Digit:** Add Check Digit to the output data
- **Convert option**
 - **NOT CONVERT:** Does not convert barcodes
 - **UPC-E as UPC-A:** Convert to **UPC-A** by inserting '0' in the data
 - **UPC-E as EAN-13:** Convert to **EAN-13** by adding '0' at the front and in the middle of data

APPLICATION MANUAL

< EAN-13 >

- **ENABLE:** Enable barcode decoding
- **ENABLE BOOKLAND:** Enable **BOOKLAND_EAN** barcodes. When unchecked, it will read **BOOKLAND_EAN** type as simple **EAN-13**
- **Transmit Check Digit:** Add Check Digit to the output data
- **Add On 2/5:** Option to read two consecutive barcodes when **EAN-13** types have neighboring additional barcodes (2 and 5 spaces)

< EAN-8 >

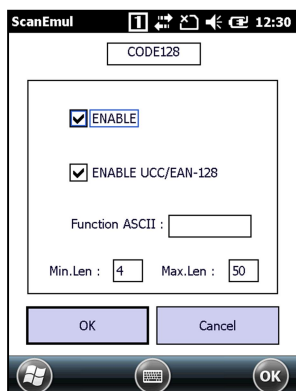
- **ENABLE:** Enable barcode decoding
- **Transmit Check Digit:** Add Check Digit to the output data
- **Convert EAN-8 as EAN-13:** convert to **EAN-13** by adding five zeros at the front of the data

< Code39 >

- **ENABLE:** Enable barcode decoding
- **Check Digit Verification:** Only decodes the barcode with check digit
- **Transmit Check Digit:** Add Check Digit to the output data
- **Format**
 - **STANDARD:** Set Code39 standard format
 - **ENABLE CODE32:** Enable **CODE32** barcodes. When selected, it will read **CODE32** type as simple **CODE39**
 - **ENABLE PZN:** Enable **PZN** barcodes. When unchecked, it will read **PZN** type as simple **CODE39**
 - **ENABLE TRIOPTIC:** Enable **TRIOPTIC** barcodes. When unchecked, it will read **TRIOPTIC** type as simple **CODE39**
 - **Full ASCII Conversion:** Outputs the letters when letters are included in the data
- **Min / Max Length:** Minimum and maximum length of the readable data

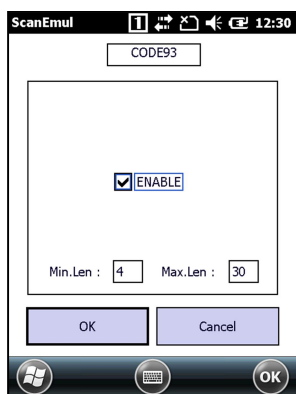
APPLICATION MANUAL

< Code128 >



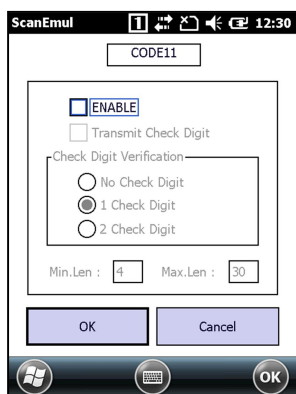
- **ENABLE:** Enable barcode decoding
- **ENABLE UCC/EAN-128:** Enable **UCC/EAN-128** barcodes. When checked, it will read **UCC/EAN-128** type as simple **CODE39**
- **Function ASCII:** Allows the user to insert data for supported types of **CODE128** barcodes
- **Min / Max Length:** Minimum and maximum length of the readable data

< Code93 >



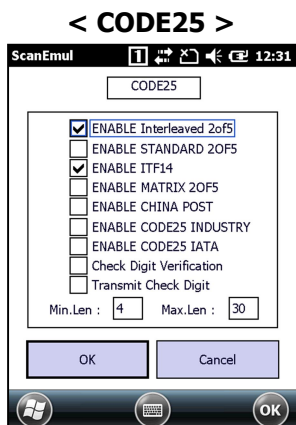
- **ENABLE:** Enable barcode decoding
- **Min / Max Length:** Minimum and maximum length of the readable data

< Code11 >

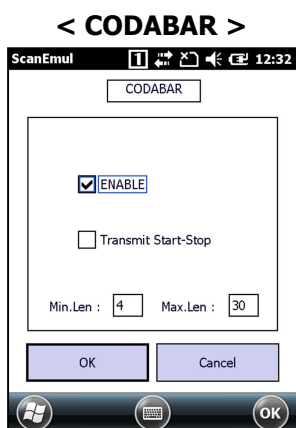


- **ENABLE:** Enable barcode decoding
- **Transmit Check Digit:** Add Check Digit to the output data
- **Check Digit Verification:** Only decodes the barcode with check digit(s)
- **Min / Max Length:** Minimum and maximum length of the readable data

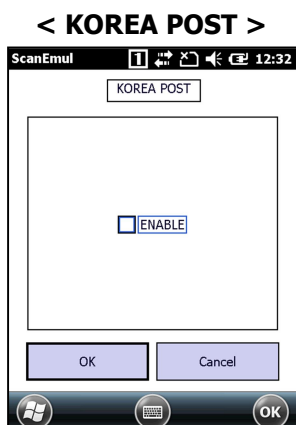
APPLICATION MANUAL



- **ENABLE Interleaved 2of5:** Enable **Interleaved 2of5** barcodes
- **ENABLE STANDARD 2of5:** Enable **STANDARD 2of5** barcodes
- **ENABLE ITF14:** Enable **ITF14** barcodes
- **ENABLE MATRIX 2OF5:** Enable **MATRIX 2OF5** barcodes
- **ENABLE CHINA POST:** Enable **CHINA POST** barcodes
- **ENABLE CODE25 INDUSTRY:** Enable **INDUSTRY** barcodes
- **ENABLE CODE25 IATA:** Enable **IATA** barcodes
- **Check Digit Verification:** Only decodes the barcode with check digit
- **Transmit Check Digit:** Check digit output option
- **Min / Max Length:** Minimum and maximum length of the readable data

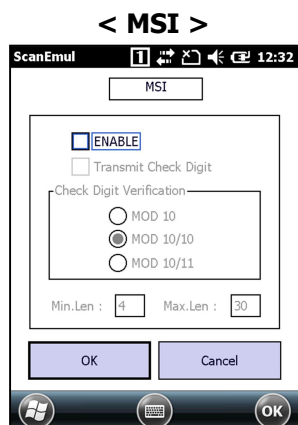


- **ENABLE:** Enable barcode decoding
- **Transmit Start-Stop:** Outputs start-stop bit of **Codabar** type barcodes
- **Min / Max Length:** Minimum and maximum length of the readable data

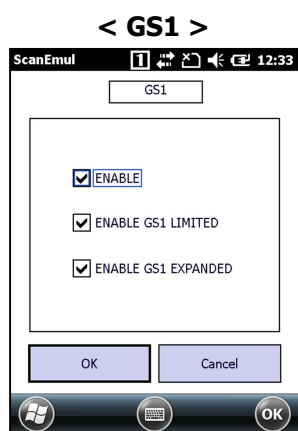


- **ENABLE:** Enable barcode decoding

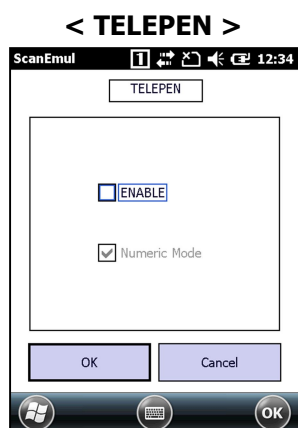
APPLICATION MANUAL



- **ENABLE:** Enable barcode decoding
- **Transmit Check Digit:** Add Check Digit to the output data
- **Check Digit Verification**
 - **MOD 10:** Inspect Check Digit of barcode by using MOD 10 mode
 - **MOD 10/10:** Inspect Check Digit of barcode by using MOD 10/10 mode
 - **MOD 10/11:** Inspect Check Digit of barcode by using MOD 10/11 mode
- **Min / Max Length:** Minimum and maximum length of the readable data



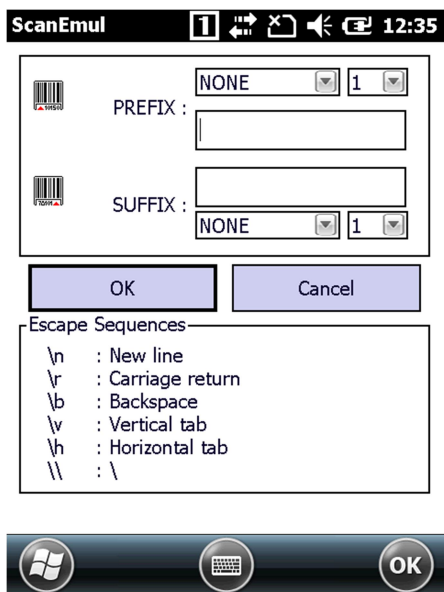
- **ENABLE:** Enable barcode decoding
- **ENABLE GS1 LIMITED:** Enable GS1 Limited Type of barcode decoding
- **ENABLE GS1 EXPANDED:** Enable GS1 Expanded Type of barcode decoding



- **ENABLE:** Enable barcode decoding
- **Numeric Mode:** Enable **Numeric Mode** barcode decoding. Numeric Mode converts character set to Numeric set by Numeric Mode rule

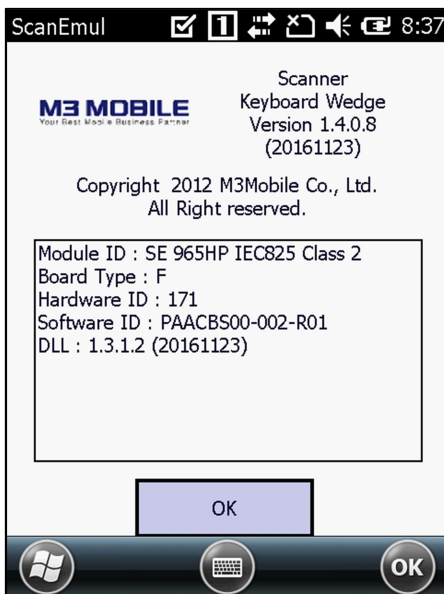
APPLICATION MANUAL

6. Prefix / Suffix



- **Prefix:** Enter data or command at the front of barcode data
 - **Virtual Key / Ctrl + A~Z**
 - **Count** (number of prefix input)
- **Suffix:** Enter data or command at the end of barcode data
 - **Virtual Key / Ctrl + A~Z**
 - **Count** (number of suffix input)
- Escape Sequences are also available for prefix and suffix. But those are only available in Keyboard output mode.

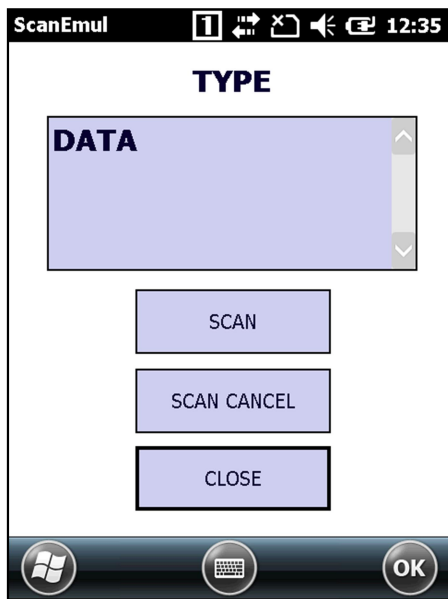
7. About



- **Shows versions of those listed below.**
 - F/W: Displays scanner Firmware information
 - ENGINE: Displays scanner engine type
 - DECODER: Displays scanner decoder version
 - DLL: Display scanner dynamic linking library version

APPLICATION MANUAL

8. Result Window



- On Result window, barcode data and symbology can be checked easily.
- **Scan:** Start scanning
- **Scan Cancel:** Stop scanning
- **Close:** Close the Display
- **TYPE:** Display symbology of barcode after scanning
- **DATA:** Display data of barcode after scanning



■ How to translate Barcode data.

We support the "translate.ini" file which recode both origin data and mapping data. When ImagerEmul works, the "translate.ini" function is automatically applied. The function changes the origin data to mapping data.

The data must refer to the hexadecimal of Ascii table. Below 0x30 is char '0'.

For example

Translate_01

origin = 0x51

mapping = 0x30

APPLICATION MANUAL

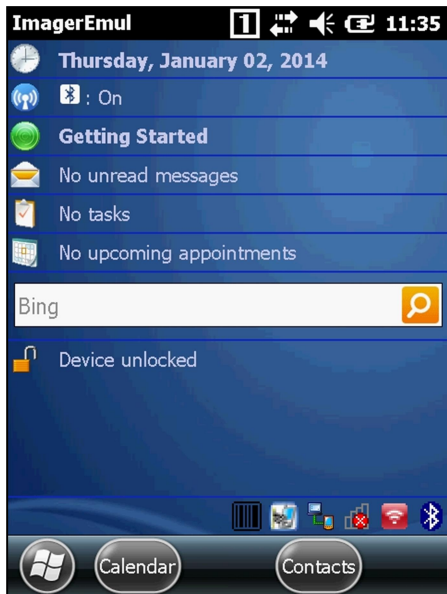
CHAPTER 4. IMAGER

4.1 ImagerEmul.exe

Note : Imager(2D) cannot be used with Camera at the same time due to same HW port use.

Switch to enable via Emulator option(Camera Switching) if necessary.

1. First view of the program



- **ImagerEmul** tray icon will appear if **ImagerEmul** is launched.

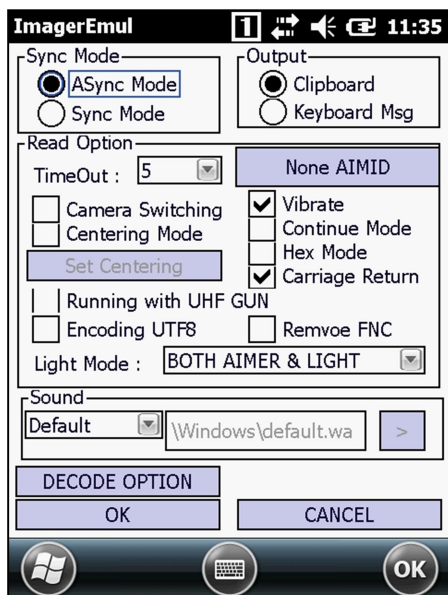
2. Pop-up menu appears when you click the icon



- **Option:** Configures general Emulator options
- **Symbology:** Configures options Regarding Symbology Option
- **Prefix / Suffix:** Enter data or command at the front or end of barcode data
- **Option Import /Export:** Save/Restore option configuration
- **Imager Camera:** The camera using imager module
- **IQ Imager: IntellImage**
- **About:** Information of **ScanEmul**
- **Result Window:** Tests reading of barcodes
- **Close:** Close the program

APPLICATION MANUAL

3. Option



- **SyncMode**

- **ASync:** Emits beam while the scan button is pressed, limited by the TimeOut
- **Sync:** Emits beam for TimeOut period

- **Output**

- **Clipboard:** Outputs the result to clipboard
- **keyboard Msg:** Outputs the result one by one as typing on keyboard

- **Reading Option**

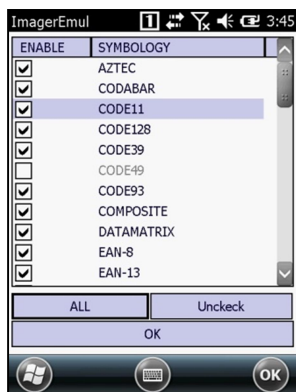
- **Time Out:** Beam emitting duration
- **Camera Switching:** Enable Camera Switching switch between imager and camera
- **Centering Mode:** Enable decodes Centering Mode. In this mode, a decode call is only successful if the area bounding the decoded symbol intersects a caller-defined rectangle located about the center of the captured image.
- **Vibrate:** Vibrate after a successful scan. Only valid for terminals with phone module
- **Continue Mode:** Emits beam constantly even after reading
- **Hex Mode:** Display the barcode data as a Hex value
- **Carriage Return:** Send **VK_RETURN** message which indicates 'Enter key' after scanning
- **Running with UHF Gun:** Use Scan reading with HUF Gun
- **Encoding UTF8:** Encode data by UTF8
- **Remove FNC:** Output Barcode Data except for FNC
- **AIMID Mode**
 - ◆ **None AIMID:** output Barcode data without AIMID of the barcode
 - ◆ **Transmit AIMID:** transmit AIMID with Barcode data on the all symbology
 - ◆ **Customize AIMID:** only output AIMID of the selected barcode type
- **Light Mode**
 - ◆ **NO Light:** Neither aimers or illumination used during scanning
 - ◆ **Aimer Only:** Aimer only used during scanning
 - ◆ **Light Only:** Illumination LEDs only used during scanning
 - ◆ **Both Aimer & Light:** Alternating aimer and illumination during scanning

- **Sound**

APPLICATION MANUAL

- **Default:** default sound after a successful scan
- **Beep:** Beeps after a successful scan
- **No Sound:** No sound after a successful scan
- **Wav:** User defined wav sound

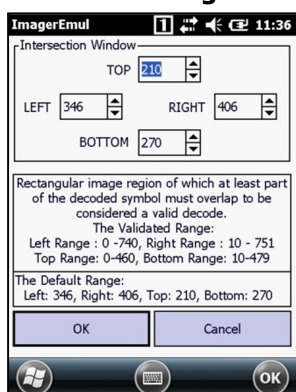
<Customize AIMID>



● Customize AIMID

- **All :** Select all barcode type
- **Uncheck:** Uncheck all barcode type

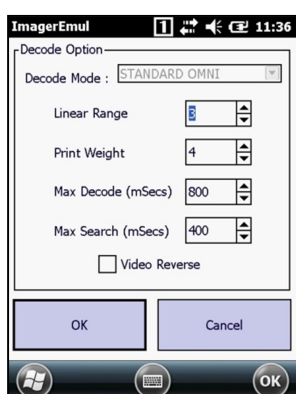
< Set Centering >



● Intersection Window

- **Top :** Input range is 0 - 460
- **Left:** Input range is 0 - 740
- **Right:** Input range is 10 - 751
- **Bottom:** Input range is 10 - 479

< Decoder Option >



● Decode Mode

- Not Support

● Linear Range: Valid range is 1-6

● Print Weight: Valid range is 1-7

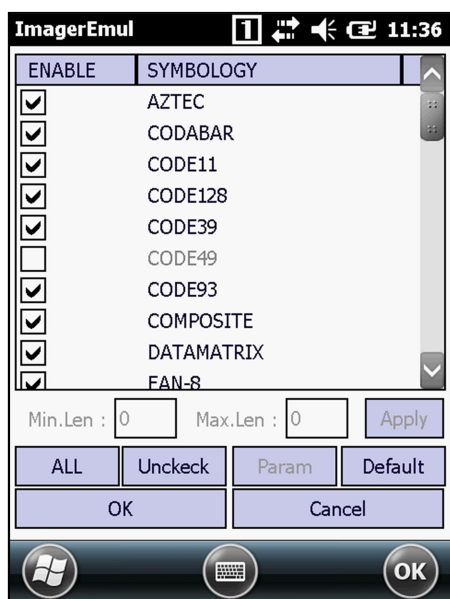
● Max Decoder(mSec): Valid range 1-10,000, '0' is disable

● Max Search(mSec): Valid range 1-10,000, '0' is disable

● Video Reverse: Enable video reverse

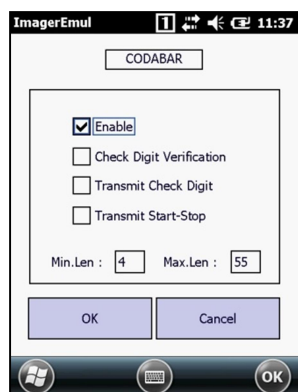
APPLICATION MANUAL

4. Symbology



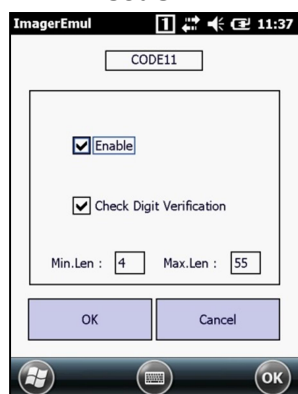
- **Advanced configuration for each barcode**
- **Enable or disable 47 different types of barcode**
- Enter advanced settings for each barcode type by click on them
- **Min / Max Length:** Set Min/Max length value on type of barcode
- **ALL: Select all barcode type**
- **Param : Set the detail information of barcode**
- **Default: Select the default information of barcode type**

< Codabar >



- **ENABLE:** Enable barcode decoding
- **Check Digit Verification:** Only decodes the barcode with check digit
- **Transmit Check Digit:** Check digit output option -> Transmit Check Digit into the Screen
- **Transmit Start-Stop:** Outputs start-stop bit of **Codabar** type barcodes

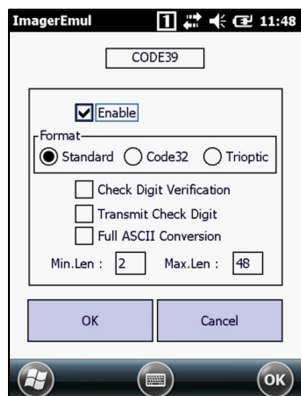
< Code11 >



- **ENABLE:** Enable barcode decoding
- **Check Digit Verification:** Only decodes the barcode with check digit

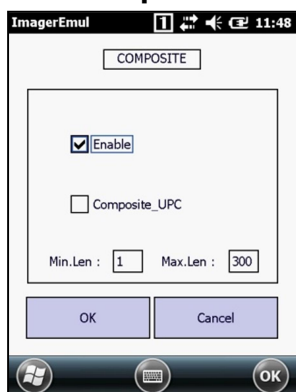
APPLICATION MANUAL

< Code39 >



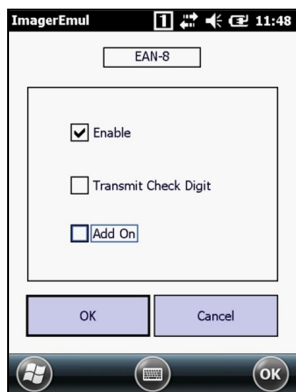
- **ENABLE:** Enable barcode decoding
- **Format :** Enable **Standard / Code32 / Trioptic**
- **Check Digit Verification:** Only decodes the barcode with check digit
- **Transmit Check Digit:** Check digit output option -> Transmit Check Digit into the Screen
- **Full ASCII Conversion:** Outputs the letters when letters are included in the data

< Composite >



- **ENABLE:** Enable barcode decoding
- **Composite_UPC:** Enable **UPC** composite codes

< Ean8 >



- **ENABLE:** Enable barcode decoding
- **Transmit Check Digit:** Check digit output option -> Transmit Check Digit into the Screen
- **Add On:** Option to read two consecutive barcodes when **UPC-A** types have neighboring additional barcodes

APPLICATION MANUAL

< Ean13 >

- **ENABLE:** Enable barcode decoding
- **Transmit Check Digit:** Check digit output option -> Transmit Check Digit into the Screen
- **Add On:** Option to read two consecutive barcodes when **UPC-A** types have neighboring additional barcodes

< INT25 >

- **ENABLE:** Enable barcode decoding
- **Check Digit Verification:** Only decodes the barcode with check digit
- **Transmit Check Digit:** Check digit output option -> Transmit Check Digit into the Screen

< OCR >

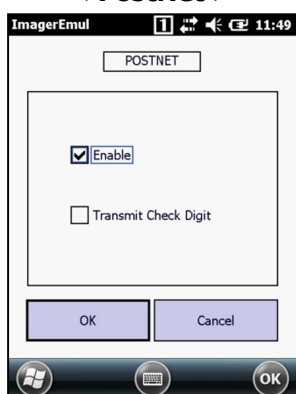
- **ENABLE:** Enable barcode decoding
- **Mode**
 - **OCR_DISABLED:** Enable OCR_DISABLED Mode
 - **OCR_A:** Enable **OCR_A** Mode
 - **OCR_B:** Enable **OCR_B** Mode
 - **OCR_MONEY:** Enable **OCR_MONEY** Mode
 - **OCR_MICR_Unsupport:** Enable **OCR_MICR_Unsupport** Mode
- **Template:** A null-terminated string that indicates one or more template patterns for the **OCR** decode. All characters in the font are matched as is, except for the following
 - **a** – alphanumeric character
 - **c** – check character
 - **d** – a digit from 0-9
 - **e** – any character
 - **g** – any character specified in group G
 - **h** – any character specified in group H
 - **i** – alphabetic letter
 - **r** – delimits a row

APPLICATION MANUAL

■ **t** – delimits multiple templates

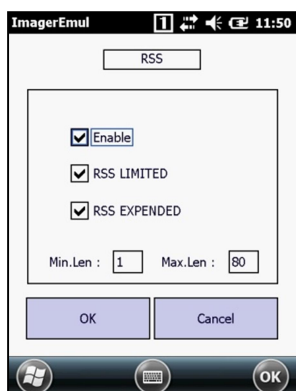
- **GroupG:** A null-terminated string that defines the set of characters matching group '**g**' in a template
- **GroupH:** A null-terminated string that defines the set of characters matching group '**h**' in a template
- **CheckChar:** A null-terminated string that defines the legal characters for checksum computation in a decoded message, use the string constant '0123456789' for modulo 10 checksums, and the string constant '0123456789ABCDEFGHIJKLMNOPQRSTUVWXYZ' for modulo 36 checksums

< PostNet >



- **ENABLE:** Enable barcode decoding
- **Transmit Check Digit:** Check digit output option -> Transmit Check Digit into the Screen

< RSS >



- **ENABLE:** Enable barcode decoding
- **RSS Limited:** Enable **RSS Limited** barcode decoding
- **RSS Expended:** Enable **RSS Expended** barcode decoding

APPLICATION MANUAL

< UPC-A >

ImagerEmul 11:50

UPC-A

☒ Enable

☐ Transmit Check Digit

☒ Transmit Number System

☐ Convert UPC-A to EAN-13

☐ Add On

OK Cancel

- **ENABLE:** Enable barcode decoding
- **Transmit Check Digit:** Check digit output option -> Transmit Check Digit into the Screen
- **Transmit Number System:** Front most number output option
- **Add On:** Option to read two consecutive barcodes when **UPC-A** types have neighboring additional barcodes

< UPC-E >

ImagerEmul 11:50

UPC-E

☒ Enable

☐ Transmit Check Digit

☐ Transmit Number System

☐ Add On

OK Cancel

- **ENABLE:** Enable barcode decoding
- **Transmit Check Digit:** Check digit output option -> Transmit Check Digit into the Screen
- **Transmit Number System:** Front most number output option
- **Add On:** Option to read two consecutive barcodes when **UPC-A** types have neighboring additional barcodes

< Planet >

ImagerEmul 11:51

PLANET

☒ Enable

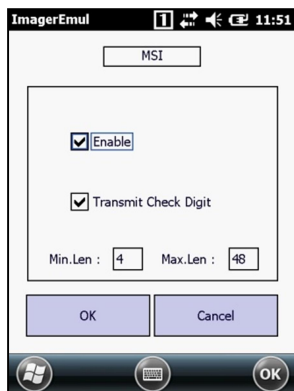
☐ Transmit Check Digit

OK Cancel

- **ENABLE:** Enable barcode decoding
- **Transmit Check Digit:** Check digit output option -> Transmit Check Digit into the Screen

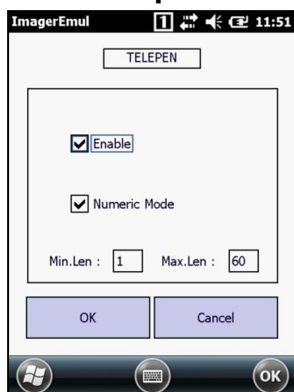
APPLICATION MANUAL

< MSI >



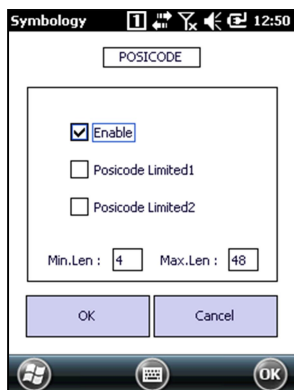
- **ENABLE:** Enable barcode decoding
- **Transmit Check Digit:** Check digit output option -> Transmit Check Digit into the Screen

< Telepen >



- **ENABLE:** Enable barcode decoding
- **Numeric Mode:** Enable **Numeric Mode** barcode decoding. Numeric Mode converts character set to Numeric set by Numeric Mode rule

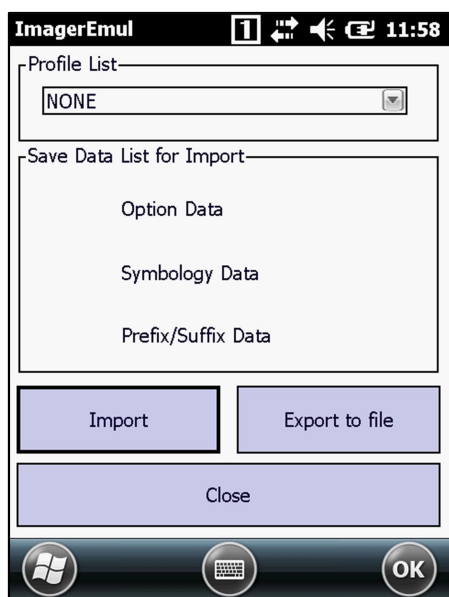
< PosiCode >



- **ENABLE:** Enable barcode decoding
- **PosiCode Limited1:** Enable **PosiCode Limited1** barcode decoding
- **PosiCode Limited2:** Enable **PosiCode Limited2** barcode decoding

APPLICATION MANUAL

5. Option Import/Export



- **Profile List:** List the Profile information including below data
 - **Option Data**
 - **Symbology Data**
 - **Prefix/Suffix Data**
- **Import:** Apply the selected profile data in device
- **Export to file :** Recode the ImagerEmul option data in selected Profile list
- **Close :** Close the Import/Export windows



■ How to translate Barcode data.

We support the "translate.ini" file which recode both origin data and mapping data. When ImagerEmul works, the "translate.ini" function is automatically applied. The function changes the origin data to mapping data.

The data must refer to the hexadecimal of Ascii table. Below 0x30 is char '1'.

For example

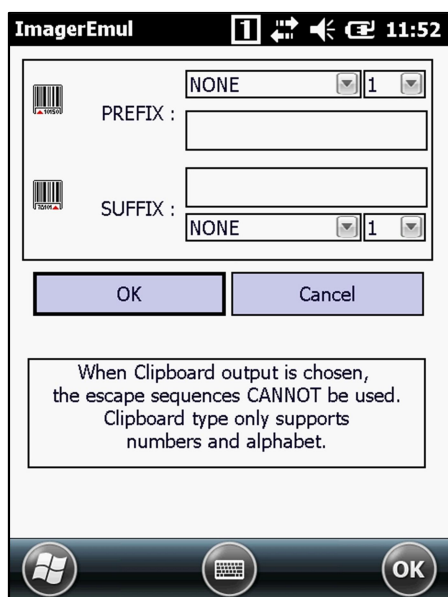
Translate_01

origin = 0x51

mapping = 0x30

APPLICATION MANUAL

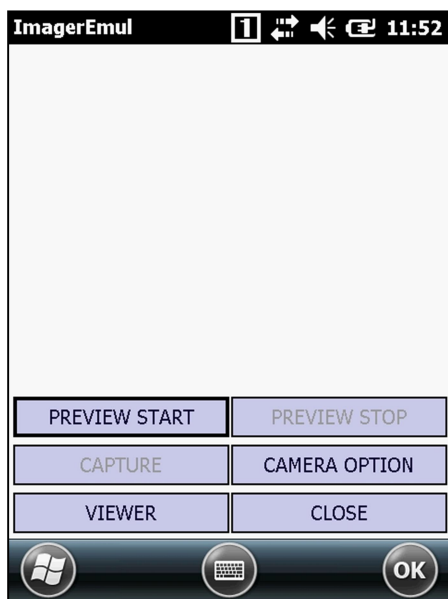
6. Prefix / Suffix



The dialog box is titled 'ImagerEmul' and shows a status bar with a signal icon, a speaker icon, and the time '11:52'. It contains two sections for barcode configuration. The first section has a 'PREFIX' label, a dropdown menu set to 'NONE', and a numeric input field set to '1'. The second section has a 'SUFFIX' label, a dropdown menu set to 'NONE', and a numeric input field set to '1'. Below these are 'OK' and 'Cancel' buttons. A text box at the bottom states: 'When Clipboard output is chosen, the escape sequences CANNOT be used. Clipboard type only supports numbers and alphabet.' At the very bottom are three circular icons: a Windows logo, a keyboard icon, and an 'OK' button.

- **Prefix:** Enter data or command at the front of barcode data Shows versions of
 - **Virtual Key / Ctrl + A~Z**
 - **Count**
- **Suffix:** Enter data or command at the end of barcode data
 - **Virtual Key / Ctrl + A~Z**
 - **Count**
- Cannot enter commands if clipboard output is used

7. Imager Camera

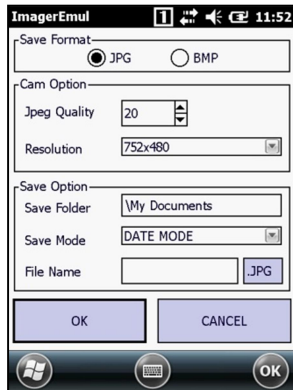


The interface is titled 'ImagerEmul' and shows a status bar with a signal icon, a speaker icon, and the time '11:52'. The main area is a large empty rectangle for the camera preview. Below this are six buttons arranged in a 3x2 grid: 'PREVIEW START', 'PREVIEW STOP', 'CAPTURE', 'CAMERA OPTION', 'VIEWER', and 'CLOSE'. At the bottom are three circular icons: a Windows logo, a keyboard icon, and an 'OK' button.

- **Preview Start:** Starts the Preview
- **Preview Stop:** Stops the Preview
- **Capture:** Saves picture after capturing
- **Camera Option:** Move to Option Page
- **Viewer:** Shows saved picture
- **Close:** Close the Imager Camera

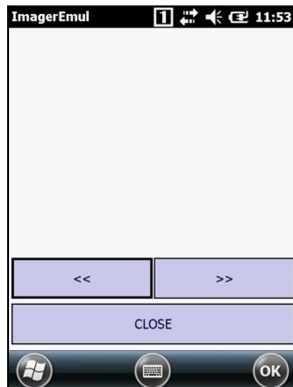
APPLICATION MANUAL

< Camera Option >



- **Save Format:** Select the save format(**Jpg/Bmp**)
- **Cam Option**
 - **Jpeg Quality:** Set **Jpeg** Quality
 - **Resolution:** Select the resolution of imager
- **Save Option**
 - **Save Folder:** Set the save path
 - **Save Mode**
 - ◆ **Date Mode:** Auto name format
 - ◆ **Custom With Num Name:** Set the name if the Name Type is Custom Mode
 - ◆ **Custom Mode:** User-defined name format
- **File Name:** Set the save File Name

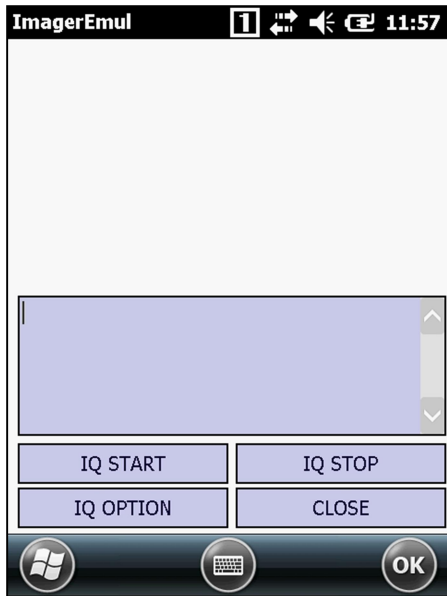
< Viewer >



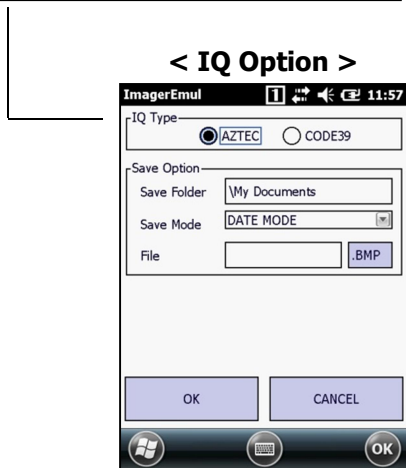
- **Image Viewer**
- **<<:** Display previous Image camera picture
- **>>:** Display next Image camera picture
- **CLOSE:** Close viewer

APPLICATION MANUAL

8. IQ Imager



- **IQ Start:** Starts the IQ Imager
- **IQ Stop:** Stops the IQ Imager
- **IQ Option:** Move to IQ Option Page
- **Close:** Close the IQ Imager



- **IQ Type:** Select the save IQ Type(**AZTEC/CODE39**)
- **Save Option**
 - **Save(1st):** Set storage position
 - **Save(2nd):** Set name type
 - **File Name:** Set the name if the Name Type is Custom Mode
- **OK:** Set the Option
- **Cancel:** Cancel the Option

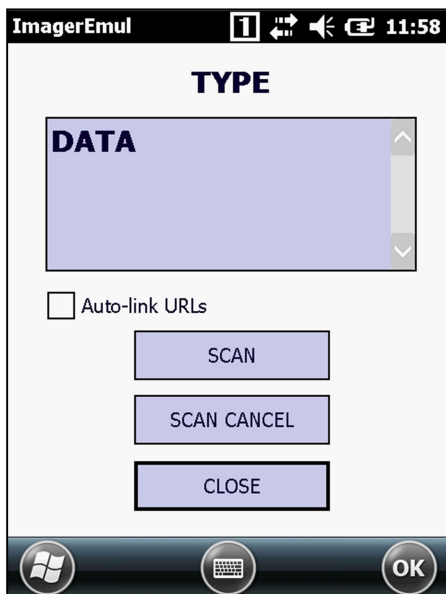
APPLICATION MANUAL

9. About



- Shows versions of those listed below.
 - ENGINE: Displays imager engine type
 - DRIVER: Display Imager driver version
 - DECODER: Displays Imager decoder version
 - SOFTWARE: Display Imager software version
 - DLL: Display Imager dynamic linking library version

10. Result Window



- **BarCode Type and data is displayed**
- **Scan:** Start scanning
- **Scan Cancel:** Stop scanning
- **Close:** Close the Display
- **TYPE:** Display symbology type of barcode after scanning
- **DATA:** Display data of barcode after scanning

APPLICATION MANUAL

CHAPTER 5. LONG -RANGE SCANNER

- Valid for MM3 and UL10 only

5.1 LRScanEmul.exe

1. First view of the program



- **ScanEmul** is properly launched if you can see **ScanEmul** tray icon at the bottom.

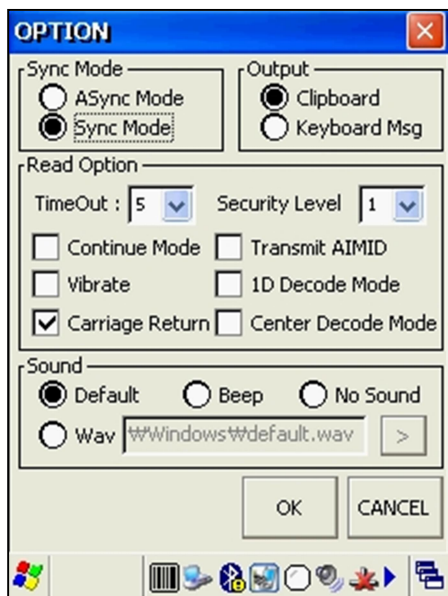
2. Pop-up menu appears when you click the icon



- **Option:** Configures general Emulator options.
- **Symbology:** Configures options Regarding Symbology Option
- **Prefix / Suffix:** Enter data or command at the front or end of barcode data
- **About:** Information of **ScanEmul**
- **Result Window:** Tests reading of barcodes.
- **Close:** Close the program

APPLICATION MANUAL

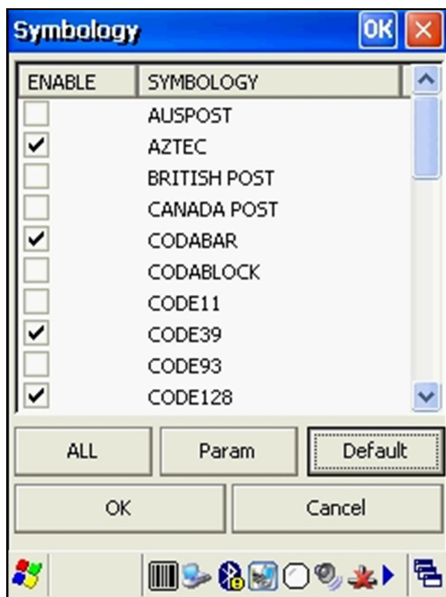
3. Option



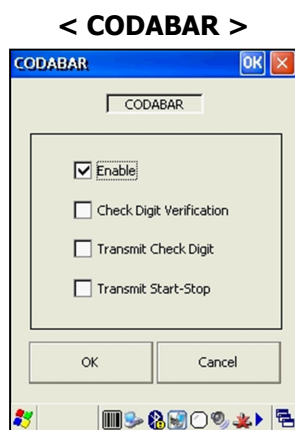
- **SyncMode**
 - **ASync:** Emits beam while the scan button is pressed. Limited by the TimeOut
 - **Sync:** Emits beam for TimeOut period
- **Output**
 - **Clipboard:** Display outputs on clipboard
 - **keyboard Msg:** Outputs the result as keyboard type -> Outputs the result which is displays one by one as keyboard type
- **Reading Option**
 - **Time Out:** Beam emitting duration
 - **Security Level:** Determines how many successful read output the result.
Ex) '2' means it needs to successfully read the barcode twice to output the result
 - **Continue Mode:** Emits beam constantly even after reading
 - **Vibrate:** Vibrate after a successful scan. Only valid for terminals with phone module
 - **Carriage Return:** Send **VK_RETURN** message after read -> Send **VK_RETURN** message which indicates 'Enter key' after scanning
 - **Transmit AIMID:** Output AIM ID of the barcode
 - **Center Decoder Mode:** When the Center Decoding option is enabled, the scanner will only decode barcodes if the laser beam/aiming dot is directly on the barcode.
- **Sound**
 - **Default:** default sound after a successful scan
 - **Beep:** Beeps after a successful scan
 - **No Sound:** No sound after a successful scan
 - **Wav:** User defined wav sound

APPLICATION MANUAL

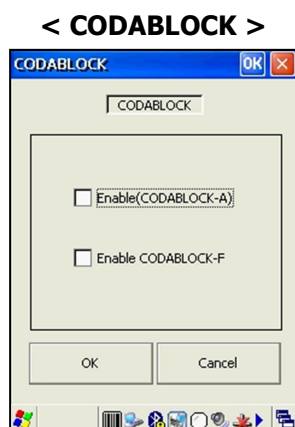
4. Symbology



- Advanced configuration for each barcode
- Enable or disable 14 different types of barcode
- Enter advanced settings for each barcode type by click on them



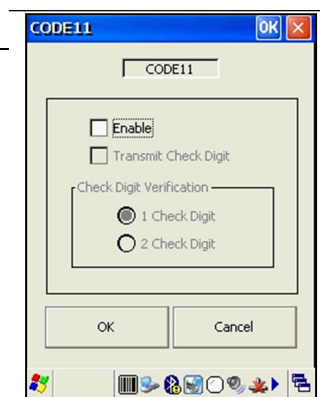
- **ENABLE:** Enable barcode decoding
- **Check Digit Verification:** Only decodes the barcode with check digit
- **Transmit Check Digit:** Check digit output option
- **Transmit Start-Stop:** Outputs start-stop bit of **Codabar** type barcodes



- **ENABLE(CODABLOCK-A):** Enable barcode decoding
- **ENABLE CODABLOCK-F:** Enable **CODABLOCK-F** barcode decoding

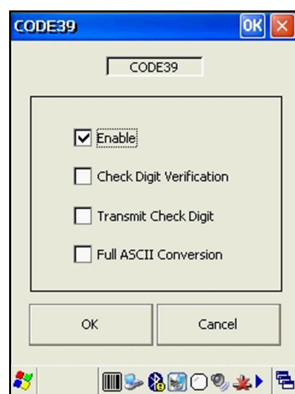
APPLICATION MANUAL

< Code11 >



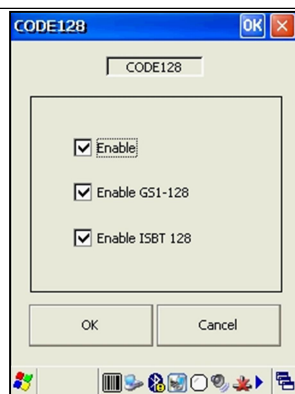
- **ENABLE:** Enable barcode decoding
- **Transmit Check Digit:** Check digit output option
- **Check Digit Verification:** Only decodes the barcode with check digit
 - **1 Check Digit:** Only decodes the barcode with one check digit
 - **2 Check Digit:** Only decodes the barcode with two check digits

< Code39 >



- **ENABLE:** Enable barcode decoding
- **Check Digit Verification:** Only decodes the barcode with check digit
- **Transmit Check Digit:** Check digit output option
- **Full ASCII Conversion:** Outputs the letters when letters are included in the data

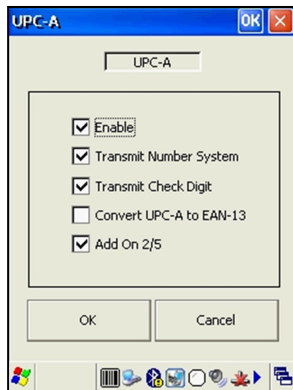
< Code128 >



- **ENABLE:** Enable barcode decoding
- **ENABLE GS1-128:** Enable **GS1-128** barcode decoding
- **ENABLE ISBT 128:** Enable **ISBT 128** barcode decoding

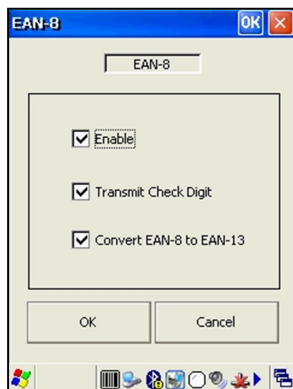
APPLICATION MANUAL

< UPC-A >



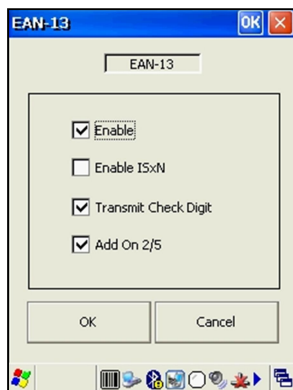
- **ENABLE:** Enable barcode decoding
- **Transmit Number System:** Front most number output option
- **Transmit Check Digit:** Check digit output option
- **Convert UPC-A as EAN-13:** Converts **UPC-A** to **EAN13** by adding '0' at the front
- **Add On 2/5:** Option to read two consecutive barcodes when **UPC-A** types have neighboring additional barcodes (2 and 5 spaces)

< EAN-8 >



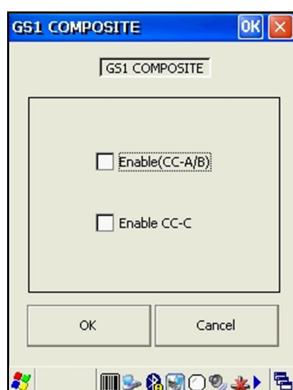
- **ENABLE:** Enable barcode decoding
- **Transmit Check Digit:** Check digit output option
- **Convert EAN-8 as EAN-13:** Convert to **EAN-13** by adding five zeros at the front of the data

< EAN-13 >



- **ENABLE:** Enable barcode decoding
- **ENABLE ISxN:** Enable **ISxN** barcode decoding
- **Transmit Check Digit:** Check digit output option
- **Add On 2/5:** Option to read two consecutive barcodes when **UPC-A** types have neighboring additional barcodes (2 and 5 spaces)

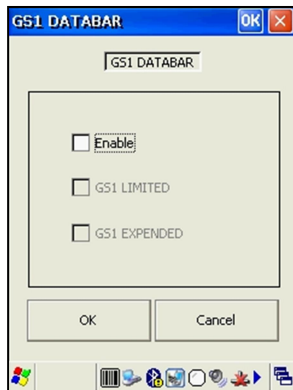
< GS1 COMPOSITE >



- **ENABLE(CC-A/B):** Enable barcode decoding
- **ENABLE CC-C:** Enable **CC-C** barcode decoding

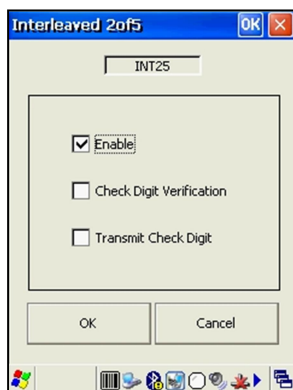
APPLICATION MANUAL

< GS1 DATABAR >



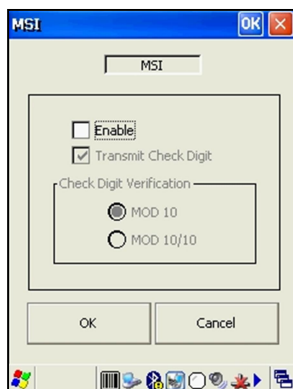
- **ENABLE:** Enable barcode decoding
- **ENABLE GS1 LIMITED:** Enable **GS1 LIMITED** barcode decoding
- **ENABLE GS1 EXPENDED:** Enable **GS1 EXPENDED** barcode decoding

< INT25 >



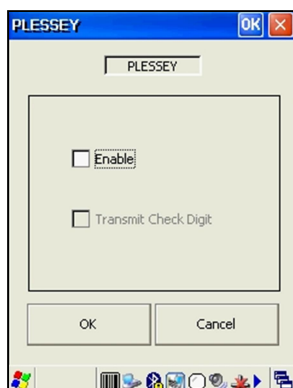
- **ENABLE:** Enable barcode decoding
- **Check Digit Verification:** Only decodes the barcode with check digit
- **Transmit Check Digit:** Check digit output option

< MSI >



- **ENABLE:** Enable barcode decoding
- **Transmit Check Digit:** Check digit output option
- **Check Digit Verification**
 - **MOD 10:** A check digit is **MOD 10**
 - **MOD 10/10:** Both check digits are **MOD 10**

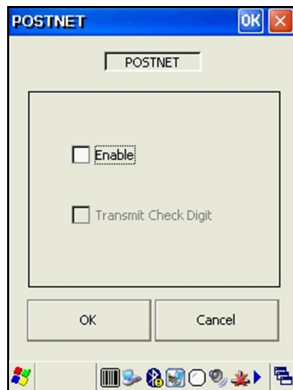
< PLESSEY >



- **ENABLE:** Enable barcode decoding
- **Transmit Check Digit:** Check digit output option

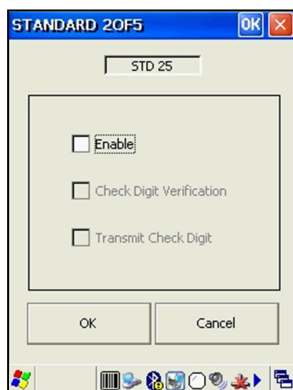
APPLICATION MANUAL

< POSTNET >



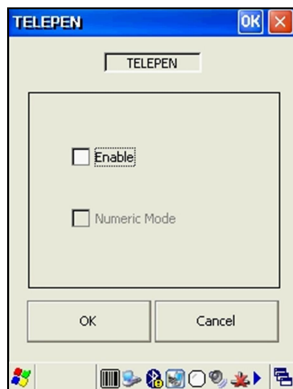
- **ENABLE:** Enable barcode decoding
- **Transmit Check Digit:** Check digit output option

< STD 25 >



- **ENABLE:** Enable barcode decoding
- **Check Digit Verification:** Only decodes the barcode with check digit
- **Transmit Check Digit:** Check digit output option

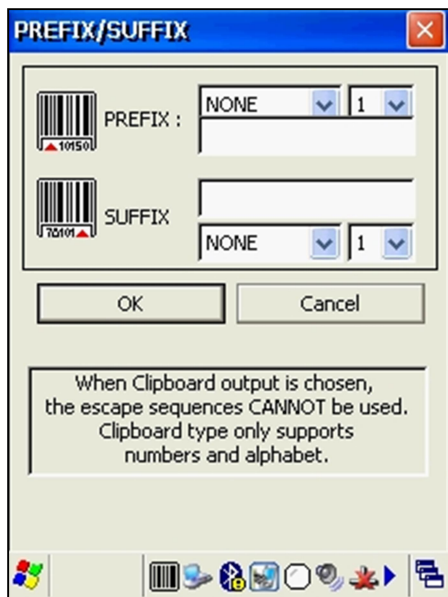
< TELEPEN >



- **ENABLE:** Enable barcode decoding
- **Numeric Mode:** Enable **Numeric Mode** barcode decoding. Numeric Mode converts character set to Numeric set by Numeric Mode rule.

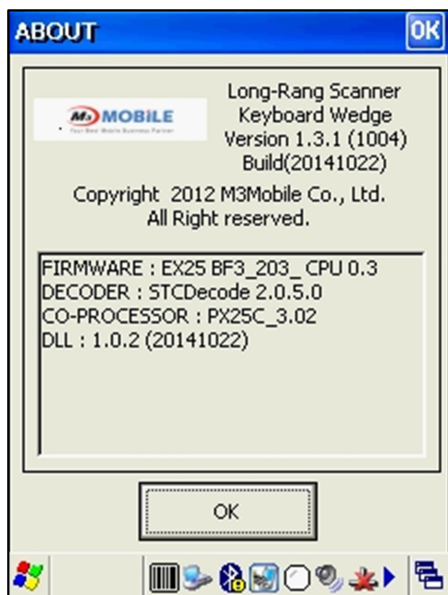
APPLICATION MANUAL

5. Prefix / Suffix



- **Prefix:** Enter data or command at the front of barcode data Shows versions of
 - **Virtual Key / Ctrl + A~Z**
 - **Count**
- **Suffix:** Enter data or command at the end of barcode data
 - **Virtual Key / Ctrl + A~Z**
 - **Count**
- Cannot enter commands if clipboard output is used

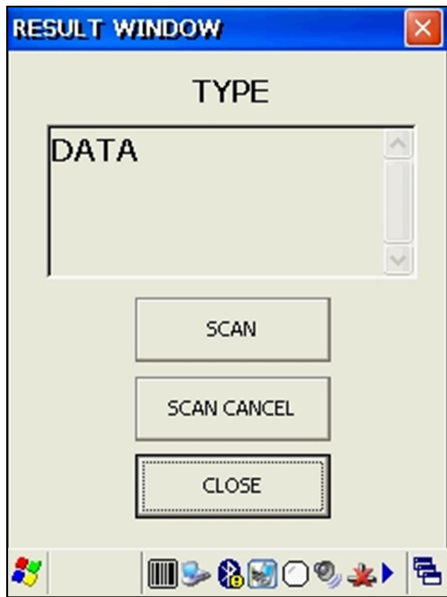
6. About



- **Shows versions of those listed below.**
 - **FIRMWARE:** Displays scanner LRScanner FirmWare information
 - **DECODER:** Displays scanner decoder version
 - **CO-PROCESSOR:** Displays LRScanner CO-PROCESSOR
 - **DLL:** Display LRScanner dynamic linking library version

APPLICATION MANUAL

7. Result Window

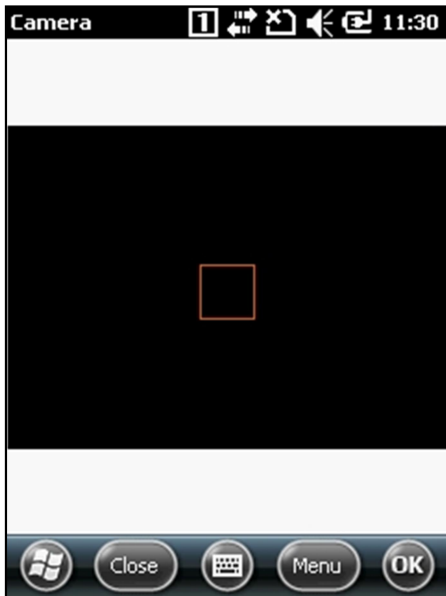


- **Bar Code Type and data is displayed**
- **Scan:** Start scanning
- **Scan Cancel:** Stop scanning
- **Close:** Close the Display
- **TYPE:** Display symbology type of barcode after scanning
- **DATA:** Display data of barcode after scanning

CHAPTER 6. CAMERA WM

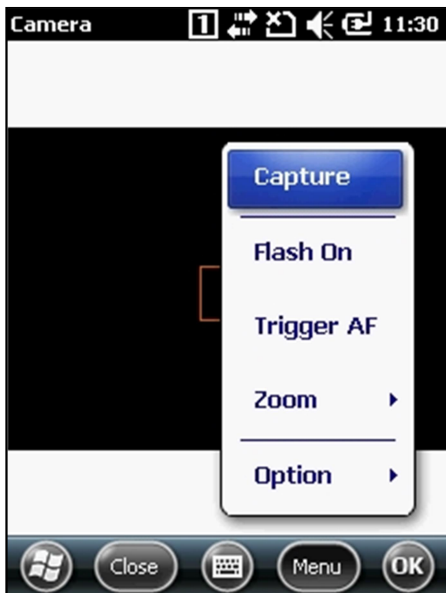
6.1 Camera.exe

1. Main Screen



- **Menu:** When clicking Menu button, Main PopUp menu is displayed
- **Close:** When clicking Close button, Camera application is closed

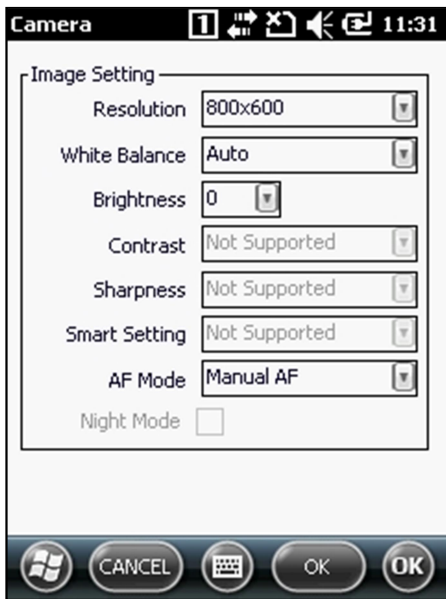
2. Menu



- **Capture:** Captures the preview image and automatically saves it in **WMy Documents WMy Pictures** (default folder)
- **Flash On / Off:** Turns on or off the flash when capturing a picture
- **Trigger AF:** Auto focusing function
- **Zoom:** Zoom to enlarge the image
- **Option:** Enters option Page. Option button is disabled when the preview is on

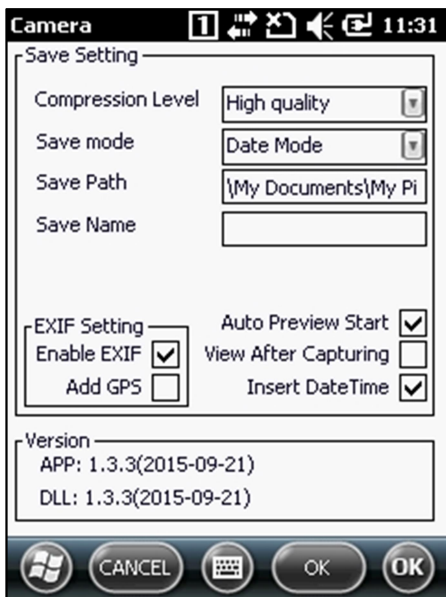
APPLICATION MANUAL

3. Image Option Screen



- **Resolution:** Settings for image size
- **Brightness / White Balance / Contrast / Sharpness / Night mode / Smart Setting:**
General settings for imaging (Night mode cannot be supported in maximum resolution. M3 SKY and MM3 do not support Contrast, Sharpness, and Smart Setting).
- **AF type**
 - **Manual AF:** Manually setting for **AF** function
 - **Always AF:** Automatically setting for **AF** function before shooting
 - **Auto AF:** Running **AF** function when the subject is moved in preview image or the environment is changed

4. Save Option Screen



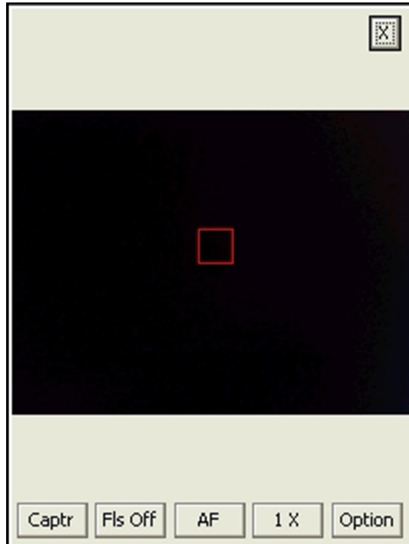
- **Compression Level:** Setting for image quality
- **Save mode:** Date mode names the taken picture according to the system date and Custom mode names the taken picture as user-defined
- **Save Path / Save Name:** Only activated in Custom Mode
- **Video Type:** Defines and supports the video file type-**WMV/AFS**, activated in Video mode only
- **Auto Preview Start:** After photo shoot execute preview automatically, when disabled screen need to be touched to turn preview on.
- **View After Capturing:** Defines whether to start the Preview right after shooting
- **Version:** Camera program version and **DLL** version can be identified
- **Insert EXIF Data:** Sets up whether the **EXIF**(exchangeable image file format) information is added when capturing JPG picture
- **Add GPS Data Into EXIF:** Sets up whether the GPS information is included in **EXIF** information (applied for GPS supported device only)
- **Insert DateTime:** Add time and date information on Image.

APPLICATION MANUAL

CHAPTER 7. CAMERA CE

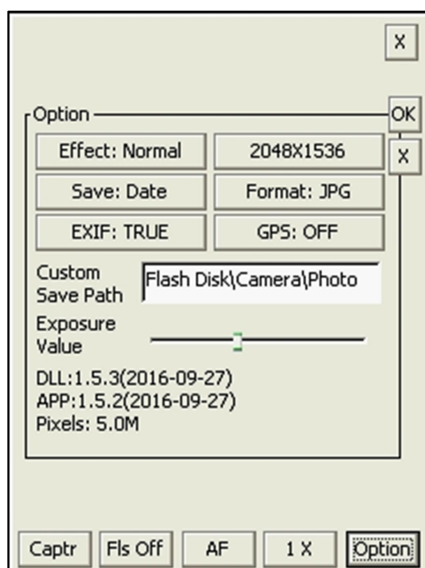
7.1 Camera.exe

1. Main Screen



- **Captr:** Captures the preview image and automatically saves it in **WFlash Disk\Camera\Photo**
- **Fls On / Off:** Turns on or off the flash when capturing a picture.
- **AF:** Auto focusing function
- **Zoom - 1 X:** Sets Zoom in and out (Displays a current status on button)
- **Option:** Displays window for setting options
- **X:** Closes the camera program
- **AF Window:** The red square box at the center of preview will turn to green when Autofocus is done

2. Option Screen (Displays a current status on button)



- **Effect – Normal:** Sets effect of picture
- **Resolution – 2048X1536:** Sets size of picture
- **Save – Date:** Date mode names the taken picture according to the system date and Custom mode names the taken picture as user-defined
- **Format – JPG:** Sets format of picture
- **EXIF – TRUE:** Sets up whether the **EXIF**(exchangeable image file format) information is added when capturing JPG picture
- **GPS – OFF:** Sets up whether the GPS information is included in **EXIF** information (applied for GPS supported device only)
- **Custom Save Path:** Assigns the file's location and name to be stored when the Save Mode is custom
- **Exposure Value:** Sets brightness of picture
- **Version:** Camera program version and **DLL** version can be identified

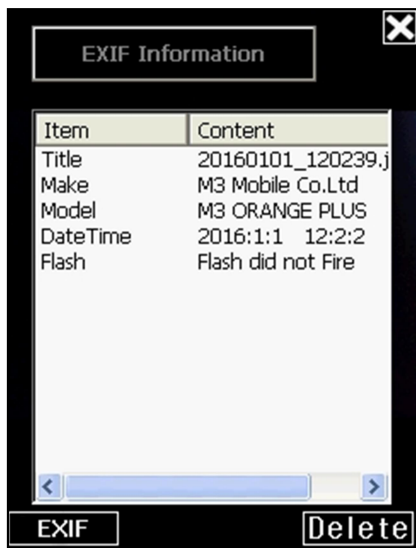
3. Viewer

APPLICATION MANUAL



- **EXIF:** Shows **EXIF** information
- **Delete:** Deletes images

4. EXIF Information



- **EXIF Information**
 - **Title:** Shows the name of picture
 - **Make:** Displays the name of manufacturing company
 - **Model:** Outputs the model name of device
 - **Date Time:** Displays the date and time of picture
 - **Flash:** Displays whether the flash was on or off

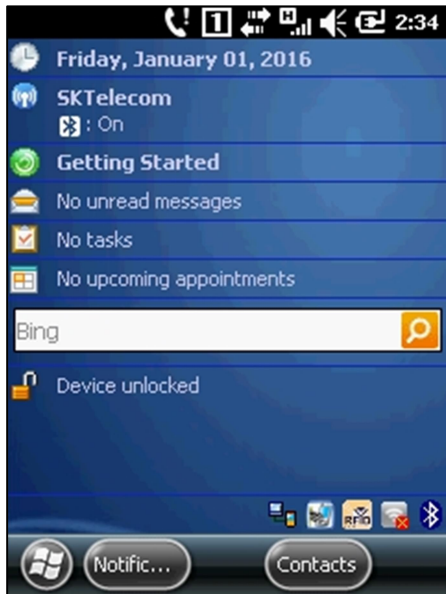
APPLICATION MANUAL

CHAPTER 8. RFID

8.1 RFIDEmul.exe

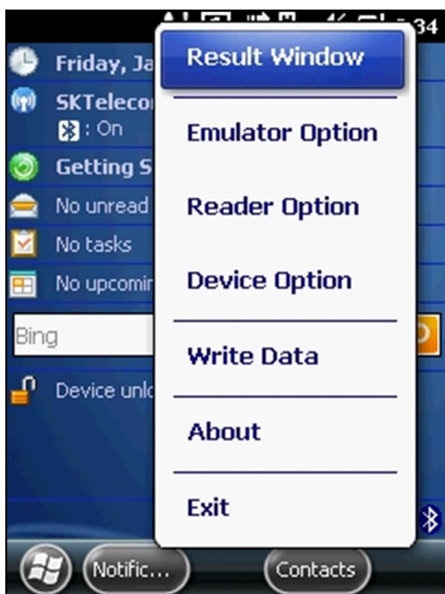
RFIDEmul allows the user to read RFID tags in any programs installed the device

1. First view of the program



- **RFIDEmul** is properly launched if you can see RFID tray icon at the bottom

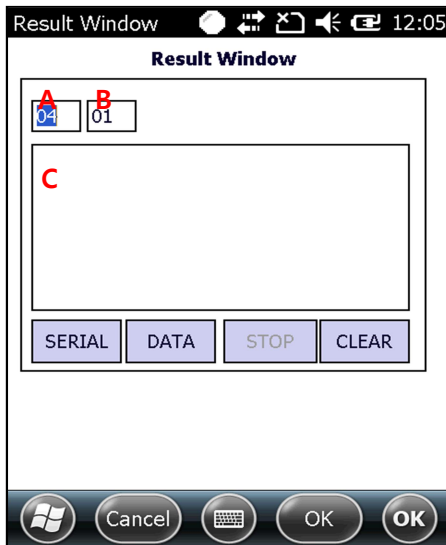
2. Pop-up menu appears when you click the icon



- **Result Window:** Tests reading and writing of tags
- **Emulator Option:** Configures general Emulator options
- **Reader Option:** Configures options regarding RFID Reader
- **Device Option:** Configures options regarding device
- **Write Data:** Writes data to the tag
- **About:** Information of RFID
- **Exit:** Exits the program

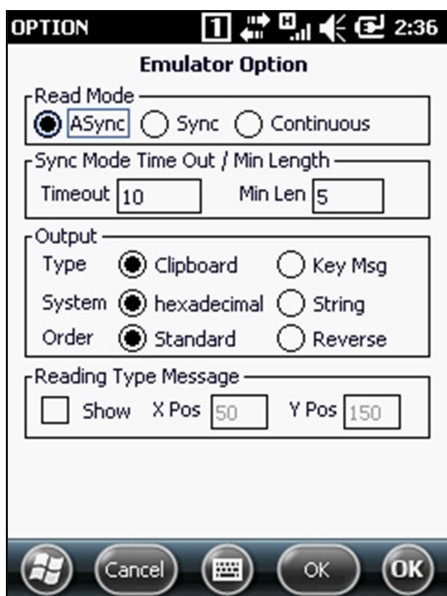
3. Result Window

APPLICATION MANUAL



- **Box A:** Start Block - Select the block of tag to write the data
- **Box B:** Inputs block number to read and write data from Block Count and Start Block (not supported LF RFID)
- **Box C:** Output the result of read
- **SERIAL button:** Performs reading of Serial Number
- **DATA button:** Performs reading of Block Data in Memories
- **STOP button:** Stops reading if Read mode is Continuous mode
- **CLEAR button:** Deletes the result

4. Emulator Option



- **Read Mode**
 - **ASync:** Reads tags if any exists within antenna field otherwise terminates
 - **Sync:** Wait until it finds tags within antenna field (10 sec)
 - **Continuous:** Continuously reads tags
- **Sync Mode Time Out / Min Length**
 - **Timeout:** Waiting time when reading in sync mode
 - **Min Len:** Sets the minimum length of the read result
- **Output**
 - **Clipboard:** Copies and pastes the data to Clipboard
 - **Keyboard Msg:** Outputs the result as keyboard type. -> Outputs the result which is displays one by one as keyboard type.
 - **Hexadecimal:** Prints the tag data in 16 antilogarithm
 - **String:** Prints the tag data with string
 - **Standard:** Output the original tag data
 - **Reverse:** Output the customized tag data by reverse
- **Reading Type Message**
 - **Show:** Show the message
 - **XPos :** X-Coordinate
 - **YPos :** Y-Coordinate

5. Reader Option

APPLICATION MANUAL

The screenshot shows a 'Reader Option' menu with the following sections:

- Select Tag Type:** A dropdown menu currently showing 'activate all tags'.
- Login:**
 - Sector: '01' with a unit 'h'.
 - Key type: Radio buttons for 'A' (selected) and 'B'.
 - Key: A text field containing 'FFFFFFFFFFFF'.
 - ☒ Use Login
 - Default button.
- Read:**
 - Read Block: '04'.
 - Block Count: '01'.
 - Prefix: An empty text field.
 - Suffix: An empty text field.
 - ☒ Suffix Enter.

At the bottom are buttons for Windows, Cancel, a keyboard icon, and two OK buttons.

- **Select Tag Type:** Select tag type that you wish to read
- **High Frequency Radio**
 - ✓ ISO 14443 Type A
 - ✓ ISO 14443 Type B
 - ✓ ICODE UID
 - ✓ ICODE EPC
 - ✓ ICODE
 - ✓ SR176
 - ✓ activate all tags
 - ✓ ISO 15693
 - ✓ ISO 15693 TAGIT
- **Low Frequency Radio**
 - ✓ All TAG types
 - ✓ EM4X02
 - ✓ EM4X05(ISO FXDB)
 - ✓ EM4X50
 - ✓ HITAG1 / HITAG S
 - ✓ HITAG2
 - ✓ TI-RFID SYSTEMS
- **Login:** Used if tag needs to be logged-in
 - **Sector:** Select the sector to login (not supported LF RFID)
 - **Key type:** Select the Key type to login (not supported LF RFID)
 - **Key:** Select the available key to login
 - **Use Login:** Defines whether to use the **Mifare** tag
 - **Default:** Back to the initial setting.
- **Read**
 - **Read Block:** Select the block to read
 - **Block Count:** Inputs block number to read from Read Block. (not supported LF)
 - **Suffix Enter:** Defines whether to use Suffix Enter after the read data
 - **Prefix:** Defines string to add before the read data
 - **Suffix:** Defines string to add after the read data

APPLICATION MANUAL



'Activate all tags' is a default tag type. By changing tag type to other specific one, read/write speed can be faster.

6. Device Option

- **Button Setting**
 - **Read Data Button:** Set shortcut button to read block data of the tag
 - **Read Serial Button:** Set shortcut button to read serial data of the tag
- **Read Sound:** Sets sound
- **Read Vibration:** Sets vibration (can be used when there is phone module)

7. Write

- **Serial:** Outputs the serial number of tag to write the data
- **Start Block:** Select the block of tag to write the data
- **Block Count:** Inputs block number to write data from Start Block. (not supported LF RFID)
- **Erase Textbox button:** Deletes the inputted data in textbox
- **Write button:** Input the written data in textbox to Block
- **Write status:** Displays the write result

APPLICATION MANUAL

8. About



● Version

- RFID Type: Displays RFID type information.(ie. HF or LF)
- Firmware Version: Displays RFID Module's firmware version.
- CFReader DLL: Displays DLL version information.
- App Version: Displays RfidEmul version information.
- Tag Type: Displays Tag Type set for RFID.

APPLICATION MANUAL

8.2 Helpful Tips



■ How is the RFID Specification of M3 SKY?

RFID Module used in **MC7510/MC7710** is **HID Global RDHO-0201N0-03** (13.56MHz), its power output is 200mW without antenna, and around 0.7W RMS with antenna.

Below table is General Information of RFID.

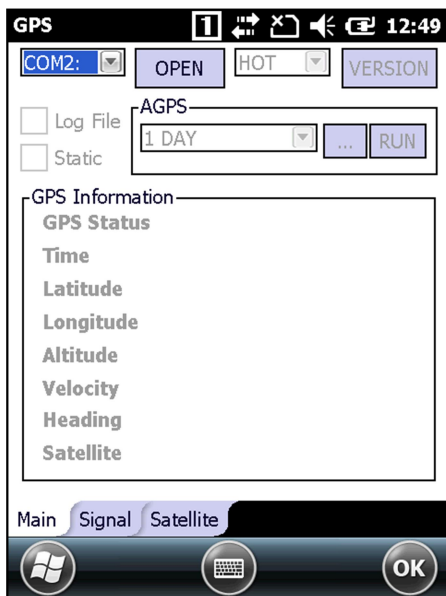
RFID TYPE	Frequency Band
LFID (Low Frequency Identification)	120 ~ 140 kHz
HFID (High Frequency Identification)	13.56 MHz
UHFID (Ultra High Frequency Identification)	868 ~ 956 MHz

APPLICATION MANUAL

CHAPTER 9. GPS

9.1 GPSTManager.exe

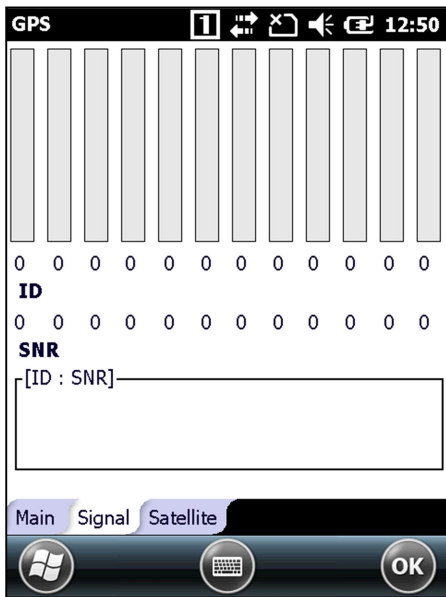
1. Main Page



- **COM Port Combo Box:** Port for GPS
- **OPEN/CLOSE Button:** Connect / Disconnect GPS
- **Start(Reset) Combo Box:** Set up GPS module hot reset / warm reset / cold reset
- **VERSION Button:** Displays Module information, DLL version and application version
- **Log File:** Makes log file
- **Static:** Performs in Static mode
- **AGPS**
 - **Day Combo Box:** Day of Almanac Data
 - **'...' Button:** Add Almanac file a Day combo box
 - **RUN Button:** Applies selected Almanac data to GPS Module
- **GPS Information**
 - **GPS Status**
 - **Time**
 - **Latitude**
 - **Longitude**
 - **Altitude**
 - **Velocity**
 - **Heading**
 - **Satellite**

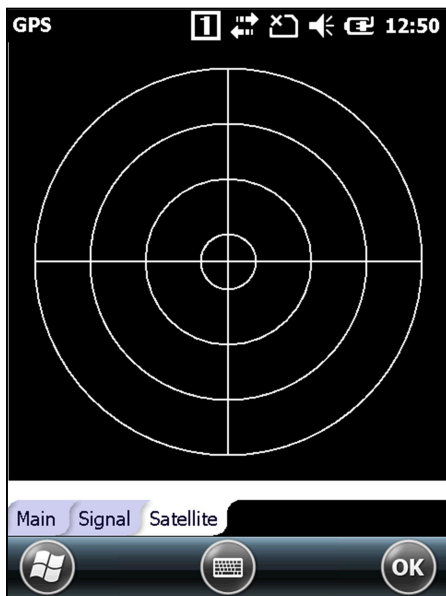
APPLICATION MANUAL

2. Signal Page



- Shows **ID** and **SNR** value that GPS module received from satellite

3. Satellite Page



- Shows location of satellite that GPS module received

APPLICATION MANUAL

9.2 Helpful Tips



■ **AGPS** function can only be used with device that **UBLOX** module is embedded

■ **GPS Start Mode**

- **Hot Start:** Start mode of the GPS receiver when current position, clock offset, approximate GPS time, and current ephemeris data are all available

- **Warm Start:** Start mode of the GPS receiver when current position, clock offset, and approximate GPS time are input by the user. Ephemeris data is not available

- **Cold Start:** A condition in which the GPS receiver can arrive at a navigation solution without initial position, time, and current Ephemeris

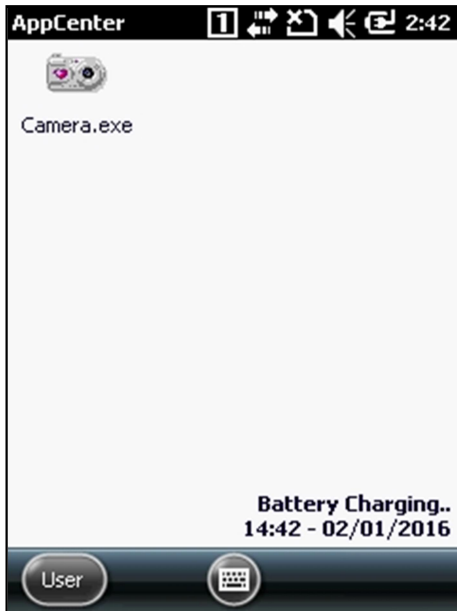
■ **Static Mode:** Reduces location error when the velocity is under the static threshold (a protection function that location value changes frequently because of interference and/or error when GPS signal reception)

APPLICATION MANUAL

CHAPTER 10. APPCENTER WM

10.1 AppCenter.exe

1. First view of the program



2. Admin Login

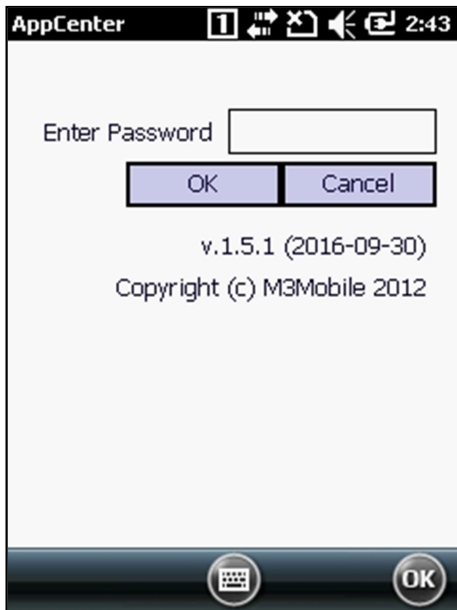
- Can activate 'Admin Login' by clicking 'User'



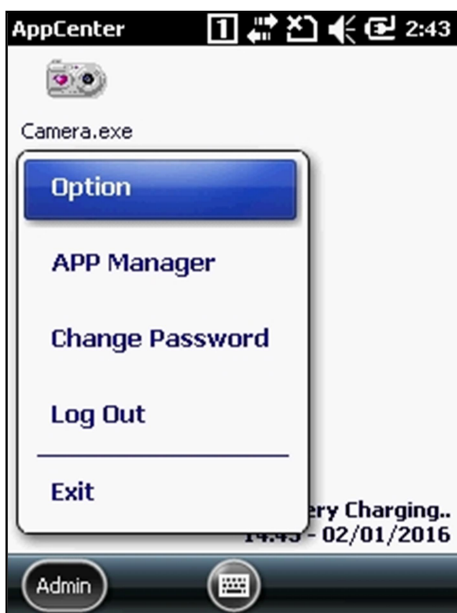
3. Admin Login

APPLICATION MANUAL

- **Enter Password:** Password (**Default: mobile**)



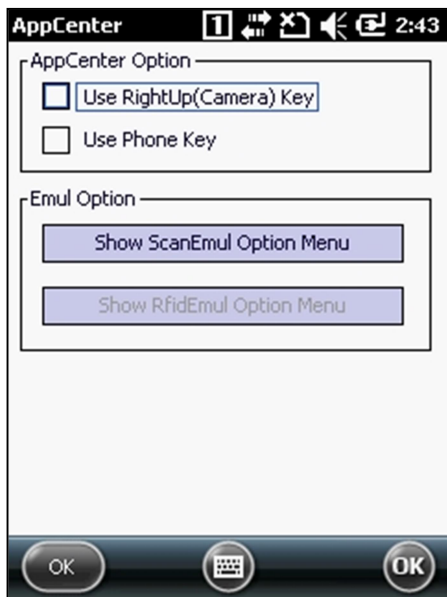
4. Admin account status



- **Option:** Set key setting, **ScanEmul** and **RfidEmul** options
- **APP Manager:** Select applications you want to register to **AppCenter**
- **Change Password:** Change admin account password.
- **Log Out:** Log out from admin account
- **Exit:** Exit from **AppCenter**

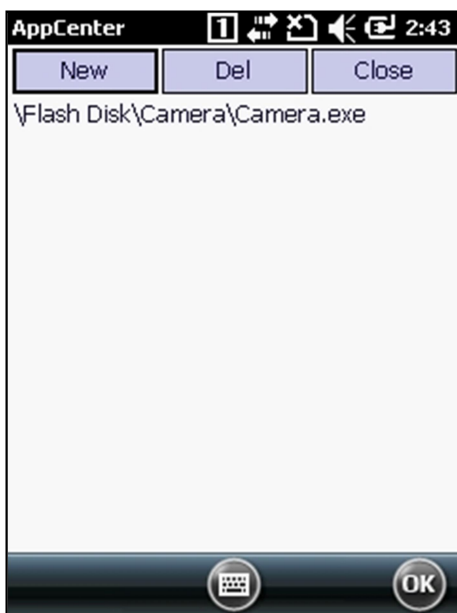
APPLICATION MANUAL

5. Option



- Sets RightUp(Camera) Key to be used in AppCenter
- Sets Phone Key to be used in AppCenter
- Sets **ScanEmul** options
 - Enable ScanEmul button when ScanEmul is running.
- Sets **RfidEmul** options
 - Enable RfidEmul button when RfidEmul is running.

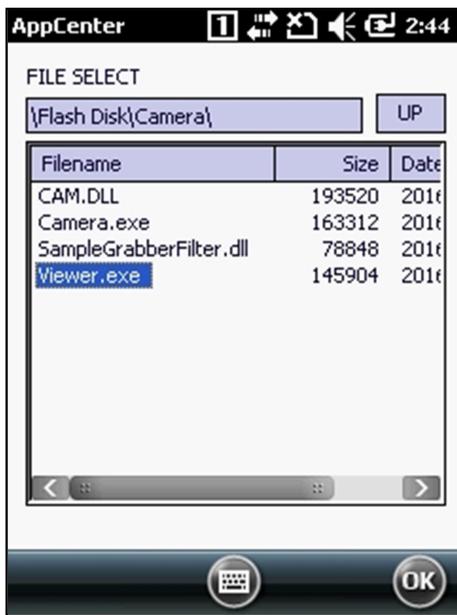
6. APP Manager



- **New Button:** Selects applications you want to register to **AppCenter**
- **Del Button:** Removes registered applications
- **Close button:** Closes registering applications

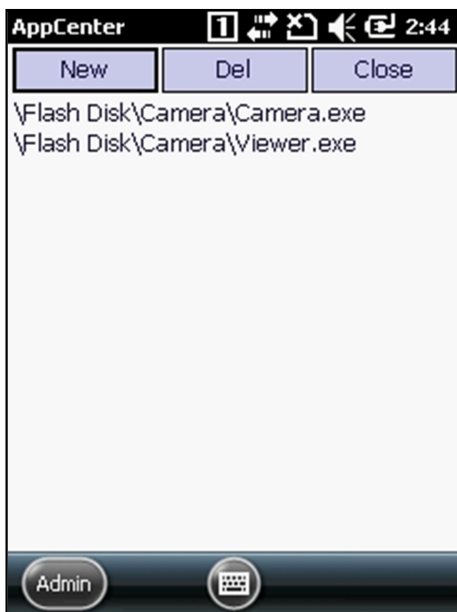
APPLICATION MANUAL

7. APP Manager → New



- **FILE SELECT:** Select executable file that you wish to register

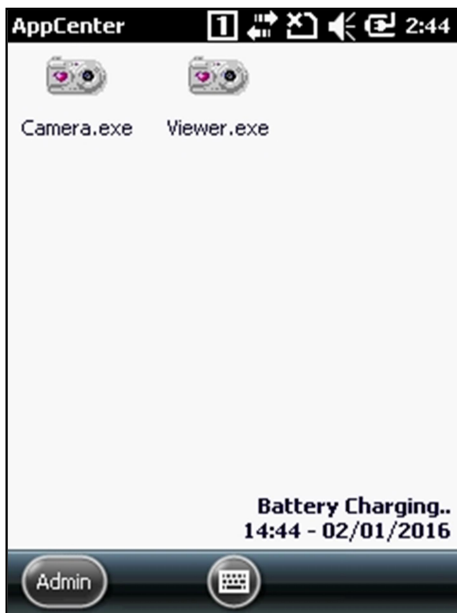
8. APP Manager Added



- **AppCenter** displays the path of the file once you have chosen the file

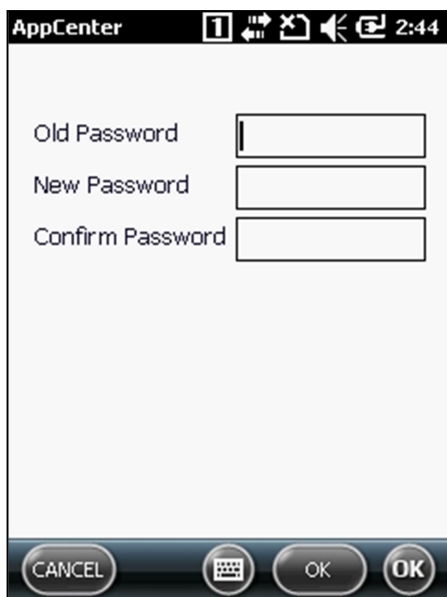
APPLICATION MANUAL

9. Application registered in AppCenter



- Registered application can be launched by clicking the icon

10. Change Password



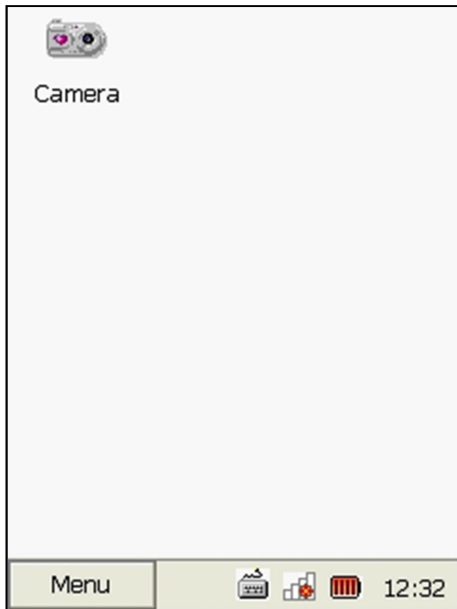
- Changing password dialog
 - Old Password : Enter current password
 - New Password : Enter new changing password
 - Confirm Password : Enter changing password to confirm password
 - OK : Change password
 - CANCEL : Cancel menu changing password

APPLICATION MANUAL

CHAPTER 11. APPCENTER CE

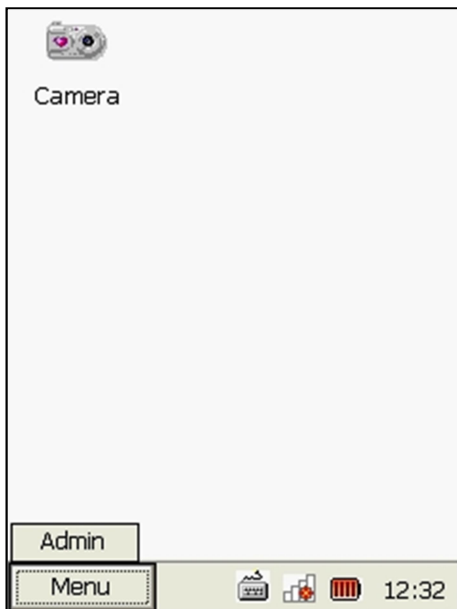
11.1 AppCenter.exe

1. First view of the program



2. Admin Login

- Can activate '**Admin Login**' by clicking '**User**'



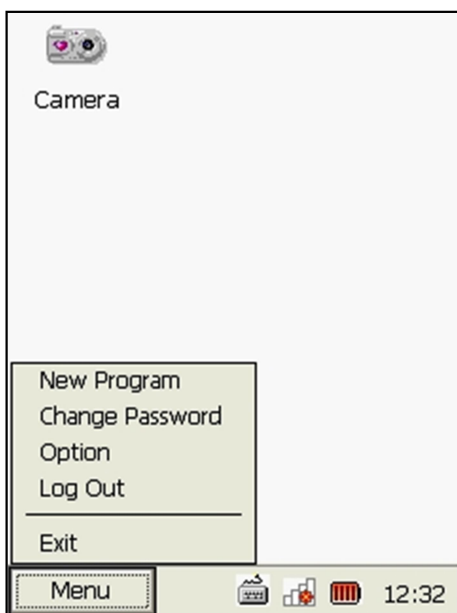
3. Admin Login

APPLICATION MANUAL

- **Enter Password:** Password (**Default: mobile**)



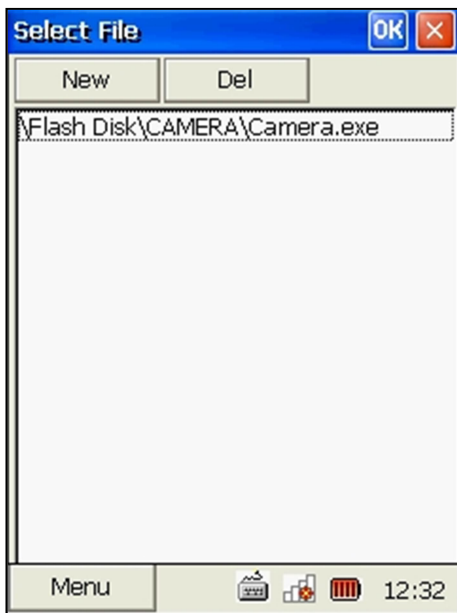
4. Admin account status



- **New Program:** Select applications you want to register to **AppCenter**
- **Change Password:** Change admin account password.
- **Option:** Change Task Bar Z-Order
- **Log Out:** Log out from admin account
- **Exit:** Exit from **AppCenter**

APPLICATION MANUAL

5. Add New Program



- **New Button:** Selects applications you want to register to **AppCenter**
- **Del Button:** Removes registered applications
- **Close button:** Closes registering applications

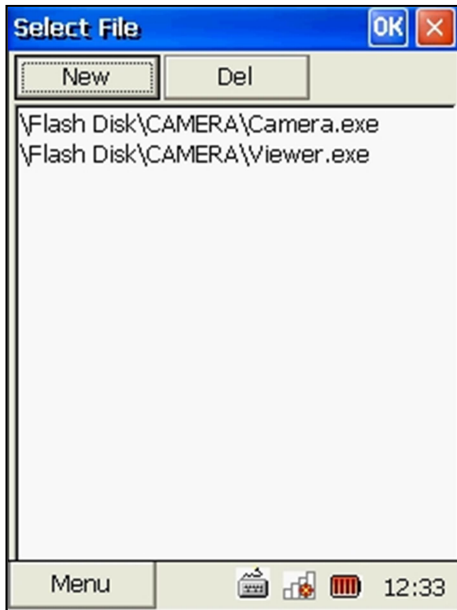
6. New Program → New



- **FILE SELECT:** Select executable file that you wish to register

APPLICATION MANUAL

7. New Program Added



- **AppCenter** displays the path of the file once you have chosen the file

8. Application registered in AppCenter



- Registered application can be launched by clicking the icon

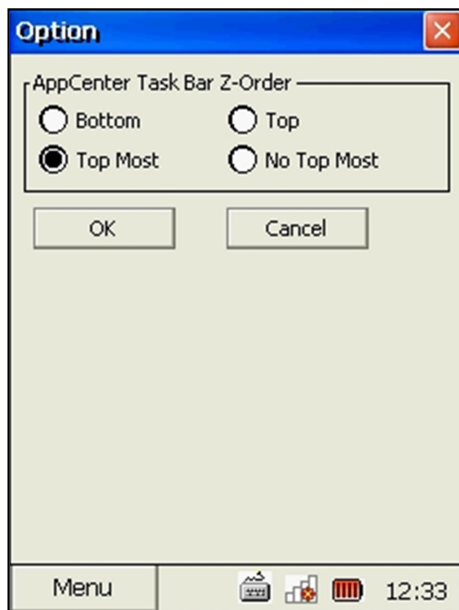
APPLICATION MANUAL

9. Change Password



- Changing password dialog

10. Option



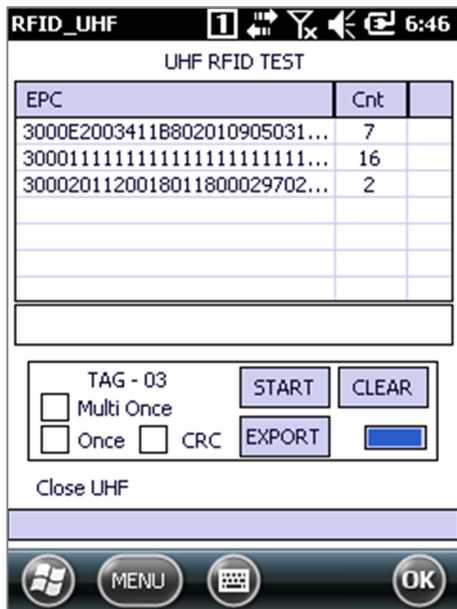
- **Bottom:** Places the window at the bottom of the z-order. If the parameter identifies a topmost window, the window loses its topmost status and is placed at the bottom of all other windows.
- **Top:** Places the window at the top of the z-order.
- **Top Most:** Places the window above all non-topmost windows. The window maintains its topmost position even when it is deactivated.
- **No Top Most:** Places the window above all non-topmost windows (that is, behind all topmost windows). This flag has no effect if the window is already a non-topmost window.

APPLICATION MANUAL

CHAPTER 12. UHF GUN READER

12.1 UHF GunTest.exe

1. First view of the program



- It will show simple EPC read and count UI.

- A. START: Starts inventory read. Continuously read EPC values of surrounding tags.
- B. CLEAR: Clear result.
- C. EXPORT: Exports result into a data file.
- D. Multi Once: Read surrounding tags only once.
- E. Once: Read a tag and stop.
- F. CRC: Display CRC with EPC.

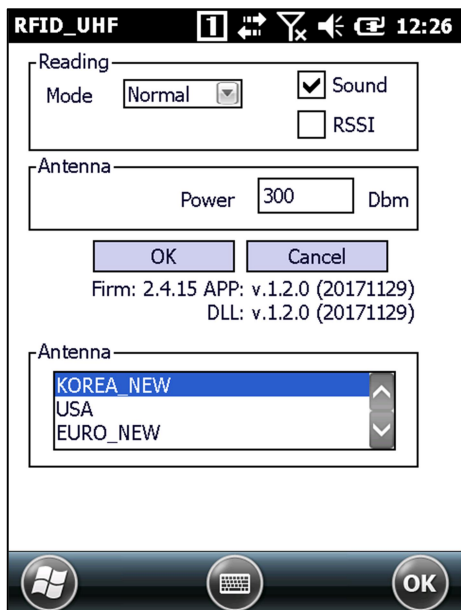
APPLICATION MANUAL

2. Access Menu

- Read/Write
 - A. Bank (Reserved, EPC, TID, User) Select.
 - B. Offset: Starting location of the memory. (Word unit)
 - C. Length: Length of the data (Word unit)
 - D. Password: If the tag is locked, Access Password is required to write data.
 - E. Read: Read data as configured and output data in the text box.
 - F. Write: Data in the text box will be written as configured.
- Lock : Set password to access the tag memory. Access password is stored in reserved area.
 - A. There are 4 access types
 - Accessible: Read and write of password is possible. Change permission is also possible.
 - Always Accessible: Read and write of password is possible. But, change permission is not possible.
 - Secured Accessible: Read and write of password is not possible. But, change permission is possible.
 - Always Not Accessible: Read and write of password is not possible. Change permission is also not possible.
 - B. Read / Write accessibility setting is possible in reserved area. EPC, USER area only allow setting for write, where read is always possible. TID is read only.
- Kill: Kill the tag. Once killed, the tag is no longer active. Kill password in reserved area is required.

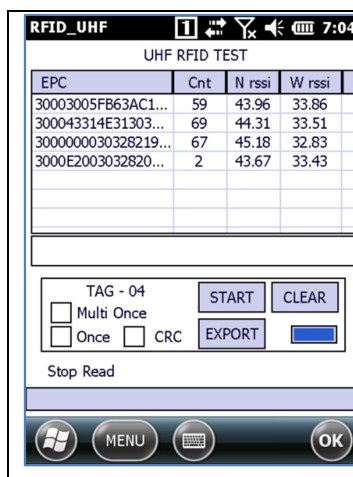
APPLICATION MANUAL

3. Config Menu



● Reading

- Mode : Tag reading process option.(reading speed)
 - Normal : Default, Tags reading output on UI.
 - Fast : Tags reading without UI.
 - Stable : Given delay between Tags reading.
- Sound : Enable/Disable Beep sound when tag reading.
- RSSI : Enable/Disable RSSI value for each tag in reading result panel.

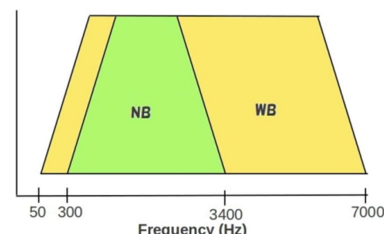


N RSSI

- The Narrowband RSSI

W RSSI

- The Wideband RSSI.



● Antenna

- POWER: Set output power. Maximum power is 300 Dbm. [The correct value is 30 dBm (30dBm = 1W = 1000mW). The last 0 of `300` is a garbage value which is called from the module]
- Reg.(Hidden menu): Set frequency according to the country regulation. It can be shown up when numeric buttons `2` and `8` are pressed together.

Ref. link:

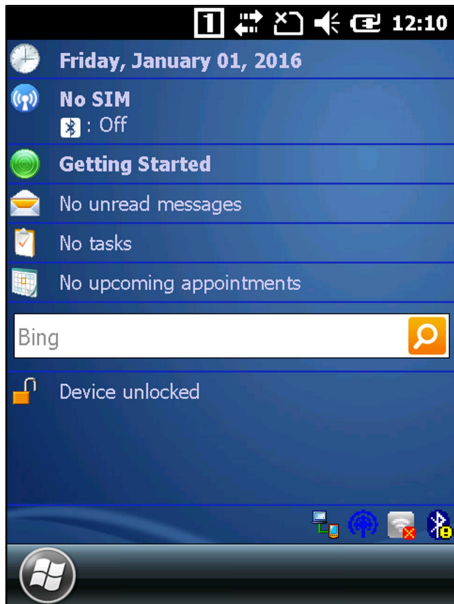
https://www.gs1.org/docs/epc/uhf_regulations.pdf

APPLICATION MANUAL

CHAPTER 13. UHF EMUL

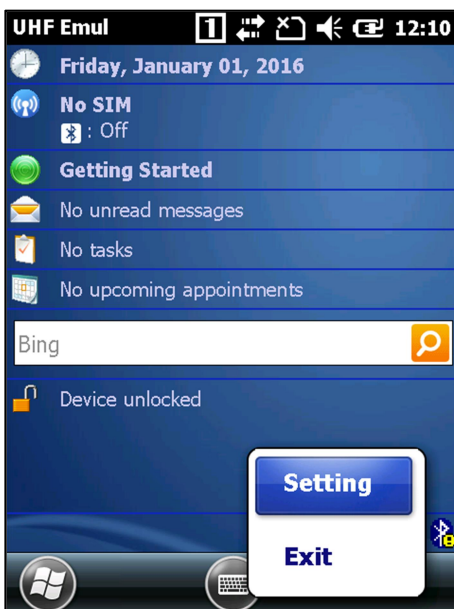
13.1 UHF_Emul.exe

1. First view of the program



- **UHF_Emul tray icon will appear. If UHF_Emul is launched.**
 - M3 UHF_Emul supports both UHF Gun Reader(UGR) and CAEN UHF Reader(Embedded).
 - 'Is this for UHF Gun Reader?' msg pops up when first run. Please select your UHF reader type correctly.

2. Pop-up menu appears when



- Setting: Configure UHF RFID Emulator options.
- Exit: Terminate UHF Emulator.
 - 'Setting.xml' file's created when emulator terminated. Effective deployment is available for same aimed other devices by copy&paste this file in same folder.

APPLICATION MANUAL

3. Setting Dialog

SETTING 5:06

SETTING

POWER mW

Output Data (WORD)

Offset Length

Mode

Separator Terminator

Ex) 0D - Enter, BC - Comma, 09 - TAB
Refer to the Virtual-Key Codes

App: 1.1.0.0
DLL : 4.7.0
Firmware: 3.8.0

Windows OK Keyboard Cancel OK

- Power: Set output power.
 - For UGR: Maximum power is 300 dBm (1000 mW)
[The correct value is 30 dBm (30dBm = 1W = 1000mW). The last 0 of `300` is a garbage value which is called from the module]
 - For CAEN: Maximum power is 200 mW (23 dBm)
- Output Data: Define output data options as Word(2 Byte)
 - Offset : Starting block of the EPC memory.
 - Length : Length of the EPC data
 - Mode : Tag reading count option.
 - ◆ Once : Randomly 1st tag reads around reader.
 - ◆ Continuous : Multiple tags are read around reader during trigger pressed.(Skip same tag)
 - Separator : Divide tags each other with this separator during 'Continuous Reading'.
 - Terminator : After stop 'Continuous Reading', the last character or action(event) can be defined.
 - ◆ Separator and terminator codes adhere by Microsoft Virtual Key Code.

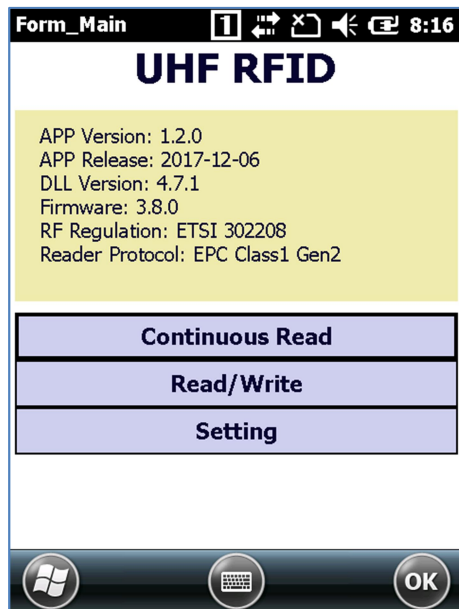
- <https://msdn.microsoft.com/library/ms927178.aspx>

APPLICATION MANUAL

CHAPTER 14. UHF CAEN

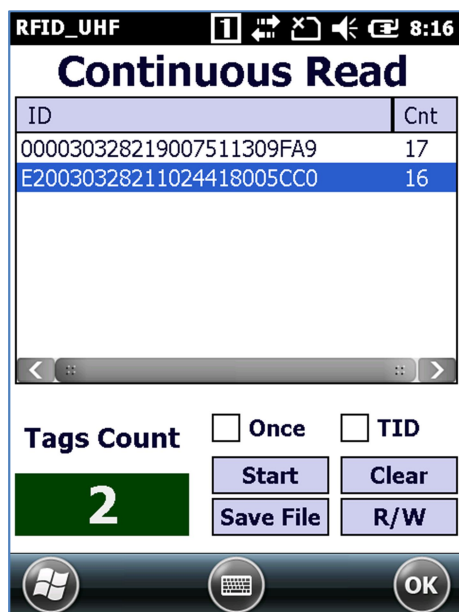
13.1 RFID_UHF_Net.exe

1. First view of the program



- Main screen shows application and FW version when launched.

2. Continuous Read



- START: Starts inventory read. Continuously read EPC values of surrounding tags.
 - Once: Read tags and stop at one time.
 - TID: When checked, TID fields data are read instead of EPC.
- CLEAR: Clear result.
- Save File: Exports result into a data file.
- R/W: Selected tag can be Read/Write with Start button.

APPLICATION MANUAL

3. Memory Access

Memory Access

000030328219007511309FA9

Write Data 0 (0 Byte)

Mem Bank EPC

Read Memory

Write Memory

Clear

Start Length 2 6

- Read/Write
 - A. Bank (Reserved, EPC, TID, User) Select.
 - B. Start: Starting location of the memory.
 - C. Length: Length of the data
 - D. Read: Read data as configured and output data
 - E. Write: Data in the text box will be written as configured.

4. Setting

Setting

SET RF Regulations

☒ ETSI_302208 ☐ CHINA

☐ FCC_US ☐ KOREA

☐ AUSTRALIA

Access Memory

☒ WORD ☐ BYTE

Antenna Power

199 mW

- Set RF Regulations: Set frequency according to the country regulation.
- Access Memory: Define data unit from Read/Write Form
 - Word = 2 Byte
 - Byte = 1 Byte
- Antenna Power : Maximum power is 200 mW (23 dBm)

APPLICATION MANUAL

CHAPTER 15. PHONE CE

14.1 Phone.exe

- M3 CE model supports data Comm. only

1. Main Page



- Phone is automatically launched if phone.exe is in MC folder.
- You can see phone signal icon on taskbar when phone's powered on.

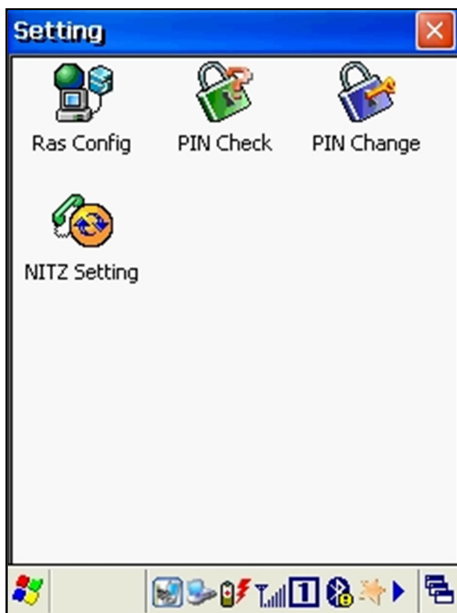
2. Pop-up menu appears when you click the icon



- **Phone Off/On** : Turn off/on phone module
- **Ras Connect** : Connect RasDial(Data session)
- **Setting** : Configure connection options
- **About** : Information of phone program
- **Exit** : Terminate the program

APPLICATION MANUAL

3. Setting



- **Ras Config** : Configures RasDial
- **PIN Check** : Check Whether to lock PIN or unlock PIN
- **PIN Change** : Change PIN(personal identification number)
- **NITZ Setting** : Configures NITZ(Network Identity and Time Zone; Sync system time with network time)

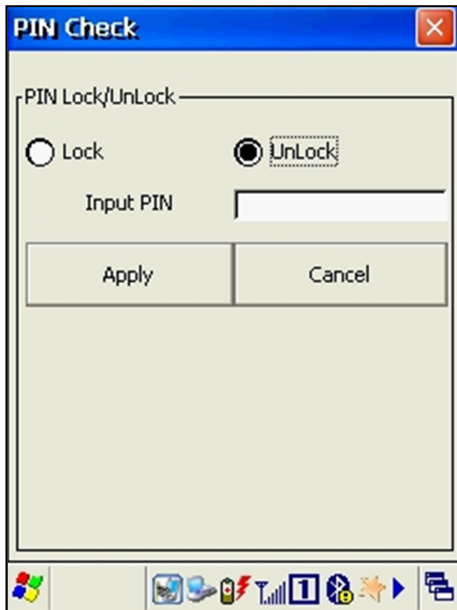
4. Ras Config



- Users must insert the Ras Config on wireless telecommunications operator.
- If user does not insert the ras config, Users do not connect the RasDial.
 - **Profile Name** : Input profile name
 - **User Name** : Input user name
 - **Password** : Input password
 - **Number** : Input number
 - **APN:** Input Access Point Name
 - **IP Address** : Input Internet Protocol address
 - **DNS1:** Input Domain Name System
 - **EXT.:** Input Extension
 - **Auto Connection** : Automatically connect Ras-dial after reset

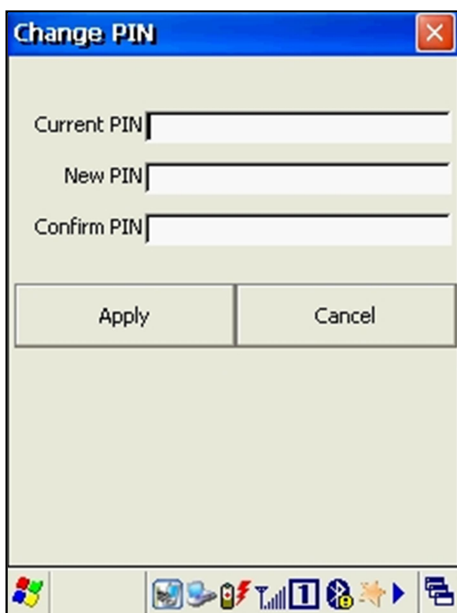
APPLICATION MANUAL

5. PIN Check



- **Lock** : Set lock
- **UnLock** : Set unlock
- **Input PIN** : Enter the PIN

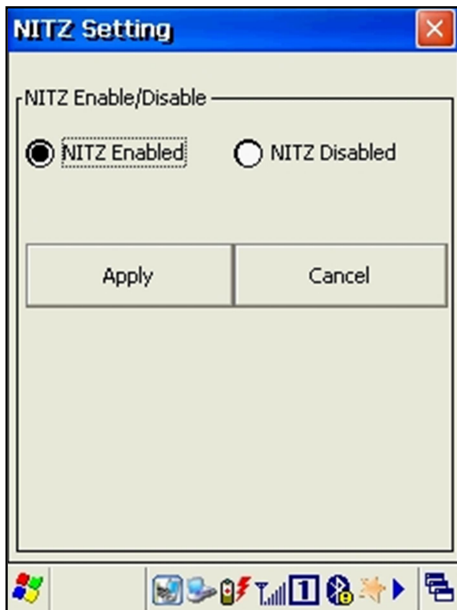
6. Change PIN



- **Current PIN** : Input Current use PIN
- **New PIN** : Input new PIN
- **Confirm PIN** : Input new PIN again

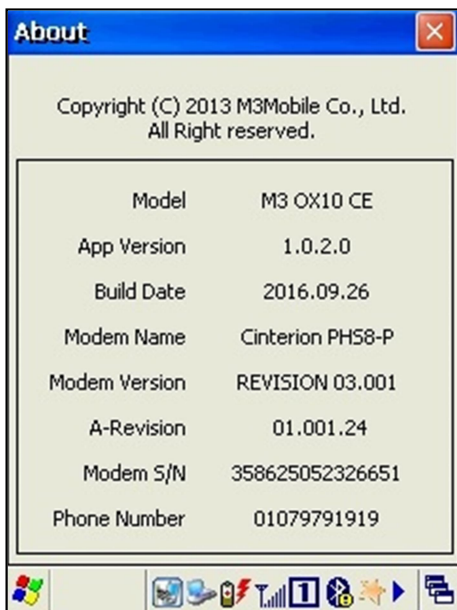
APPLICATION MANUAL

7. NITZ Setting



- **NITZ Enabled** : Enable NITZ
- **NITZ Disabled** : Disable NITZ

8. About



- Show version of those listed below
 - **Model** : Display Device model
 - **Modem Name** : Display Modem Name
 - **Modem Version** : Display modem Firmware information
 - **A-Revision** : Display A-Revision of modem
 - i. If A-Revision info. can't be supported. The "-" information is displayed.
 - **Model S/N** : Display Serial Number of modem
 - **Phone Number** : Display Phone number

APPLICATION MANUAL

Services

If you experience any trouble while using our product, you can visit **M3 Service center** or send enquires to our **online support web page** (<http://itc.m3mobile.net>), we will do our best to solve your trouble as soon as we can.

[M3 FAQ](#) document can help you with troubleshooting.

For any enquires about business program, please contact program provider for faster service.

Contact details

Headquarter

4F, Namjeon building, 44, Guuigangbyeon-ro, Gwangjin-gu, Seoul, Korea, 05116

Tel: +82 2 574 0037 Fax: +82 2 558 1253

www.m3mobile.net, sales@m3mobile.co.kr

Factory / Service Center

Chun-ui Techno Park 201-610, 202, Chunui-Dong, WonMi-Gu, Buchoen, Gyeonggi-Do, 420-857, Korea

Tel: +82 32 623 0030, Fax: +82 32 623 0035

Online Support Web page

<http://itc.m3mobile.net>